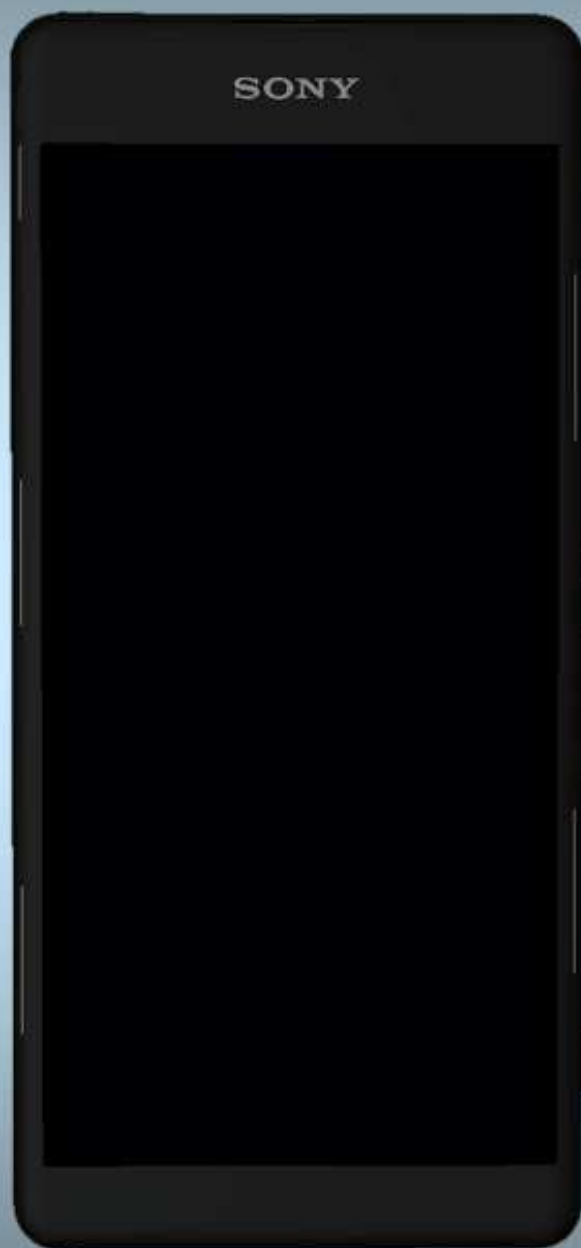


## Troubleshooting Guide

- mechanical -



**Xperia™ XA**

**F3111, F3112, F3113, F3115, F3116**

## CONTENTS

<b>1</b>	<b>Problem Areas .....</b>	<b>5</b>
1.1	Power .....	5
1.1.1	Will not power on or will switch off randomly.....	5
1.2	Keys .....	7
1.2.1	Back, Menu, Home and Multitask Keys .....	7
1.2.2	Volume Key .....	7
1.2.3	On/Off Key.....	9
1.2.4	Camera Key.....	10
1.3	Touch Screen .....	13
1.3.1	Touch Screen malfunction.....	13
1.4	Display .....	14
1.4.1	Graphics & Illumination .....	14
1.5	LED/Illumination.....	15
1.5.1	LED/Illumination .....	15
1.6	Speaker .....	16
1.6.1	Loudspeaker .....	16
1.7	Earphone .....	19
1.7.1	Receiver.....	19
1.8	Microphone.....	20
1.8.1	Primary Microphone .....	20
1.8.2	Secondary Microphone .....	22
1.9	Vibrator .....	24
1.9.1	Vibrator not generating alerts .....	24
1.10	Camera.....	26
1.10.1	Main Camera .....	26
1.10.2	Video Call Camera defects.....	27
1.11	Flash LED .....	28
1.11.1	Flash LED not flashing.....	28
1.12	Bluetooth and WLAN .....	29
1.12.1	Bluetooth or WLAN connection failure.....	29
1.13	NFC .....	30
1.13.1	NFC malfunctions.....	30
1.14	GPS .....	31
1.14.1	GPS malfunctions.....	31
1.15	Compass.....	32
1.15.1	Compass fails .....	32
1.16	Accelerometer .....	33
1.16.1	Accelerometer test fails .....	33
1.17	Gyroscope .....	34
1.17.1	Gyroscope test fails .....	34
1.18	Ambient Light Sensor .....	35
1.18.1	Light Sensor malfunctions .....	35
1.19	Proximity Switch .....	37

1.19.1 Proximity switch malfunctions .....	37
<b>1.20 Hall Sensor .....</b>	<b>39</b>
1.20.1 Hall Sensor test fails .....	39
<b>1.21 Real Time Clock .....</b>	<b>40</b>
1.21.1 Real time clock test fails .....	40
<b>1.22 Total call time .....</b>	<b>41</b>
1.22.1 Total call time fails .....	41
<b>1.23 External Memory .....</b>	<b>42</b>
1.23.1 Memory Card not detected .....	42
<b>1.24 Security.....</b>	<b>43</b>
1.24.1 Security fails .....	43
<b>1.25 FM Radio.....</b>	<b>44</b>
1.25.1 No/Poor FM Radio reception .....	44
<b>1.26 Verify Certificates.....</b>	<b>45</b>
1.26.1 Verify Certificates fails .....	45
<b>1.27 Network &amp; Signal.....</b>	<b>46</b>
1.27.1 No/Poor signal .....	46
<b>1.28 SIM (F3111/F3113/F3115) .....</b>	<b>49</b>
1.28.1 SIM not detected.....	49
1.28.2 Incorrect Nano SIM indicated .....	49
<b>1.29 SIM (F3112/F3116) .....</b>	<b>50</b>
1.29.1 SIM not detected.....	50
1.29.2 Incorrect Nano SIM indicated .....	50
<b>1.30 Charging .....</b>	<b>51</b>
1.30.1 Battery will not charge by USB connector .....	51
<b>1.31 Audio Jack test.....</b>	<b>54</b>
1.31.1 Connection to headset fails.....	54
<b>1.32 Data Communication .....</b>	<b>55</b>
1.32.1 Data transfer via System Connector fails.....	55
<b>2 Revision History .....</b>	<b>57</b>

***Always firstly disconnect the Battery connector to cut off power supply when the Battery Cover Assy is disassembled.***

***Always finally connect the Battery connector before the Battery Cover Assy is reassembled.***

***Note: Proximity Calibration always must be performed when Rubber PL Sensor, Display Cover Assy or Main PBA reassembly, or Rubber PL Sensor or Display Cover Assy replacement, or Board Swap, or proximity malfunctions; 1289-2983 Sony Mobile Repair Application-mechanical.***

***Note: Accelerometer Calibration always must be performed when Main PBA reassembly, or Board Swap, or wrong Accelerometer readouts; 1289-2983 Sony Mobile Repair Application-mechanical.***

***Note: Color ID Flashing must be performed when Board Swap; 1289-2983 Trouble Shooting Application – mechanical.***

***Note: There is no Light sensor default value stored in swap board, but it can be restored by re-flashing. Generally you do not need to use the 1289-2983 Sony Mobile Repair Application – mechanical Light Sensor default value reset function.***

***If there are no special indications of 'F3111, F3112, F3113, F3115 or F3116', 'F3111, F3112, F3113, F3115 and F3116' share the same trouble shooting guide as common sections, whose pictures are used with F3111.***

## 1 Problem Areas

### 1.1 Power

#### 1.1.1 Will not power on or will switch off randomly

**Check:**

Check whether the phone vibrates by pressing the on/off key.

**Action:**

1. If activation of the vibrator is detected, but no display, refer to section 1.4 'Display'.

2. If NO activation of the Vibrator is detected and no display by pressing the on/off key, perform a force shut down, press power key and volume up key for 11 seconds and then power on the unit again.

3. If still NO activation of the Vibrator is detected and no display by pressing the on/off key, check that the battery is charging when connected to a charger.

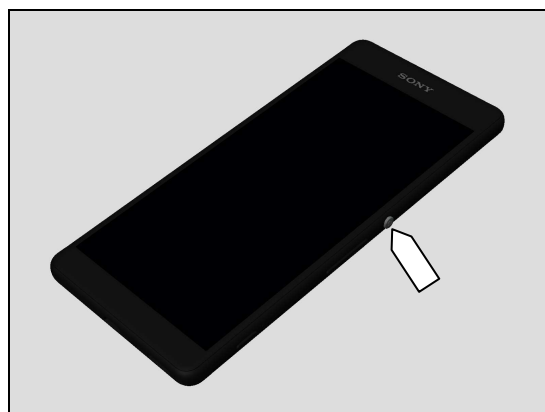
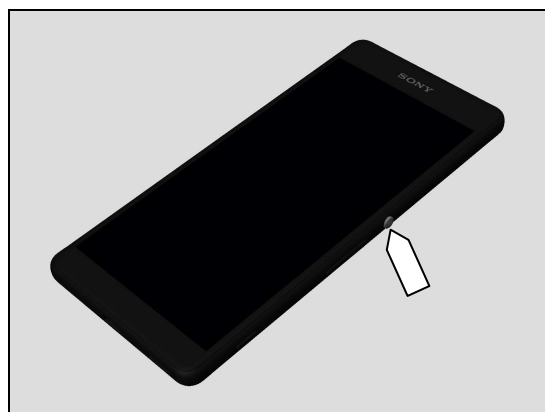
**Follow Test Instruction - mechanical chapter 2.3.8 (Charging via Charger or Computer), Diagnostic Battery / Charging status.**

**Check:**

Inspect the on/off key.

**Action:**

Refer to section 1.2.3 'On/Off Key'.



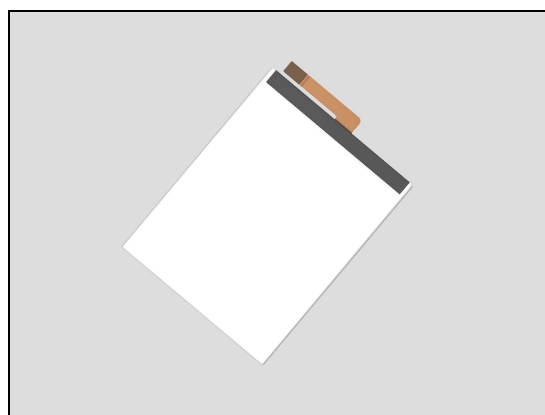
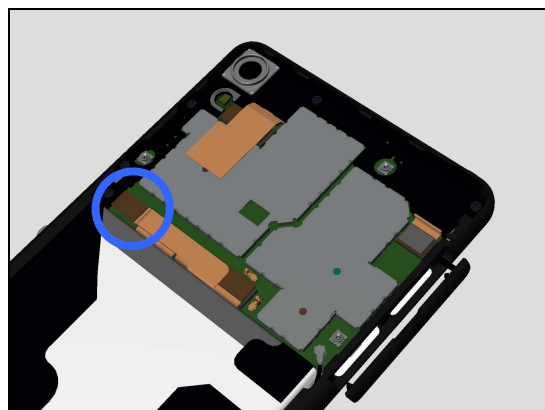
## Problem Areas: Power

**Check:**

Inspect the Battery connector to Main PBA.

**Action:**

1. If not properly connected – disconnect and reconnect it.
2. If dirty or oxidized – clean the both sides of the BtB connector.
3. If the BtB connector, the FPC or the Battery is damaged – replace the Battery.
4. Replace Main PBA.



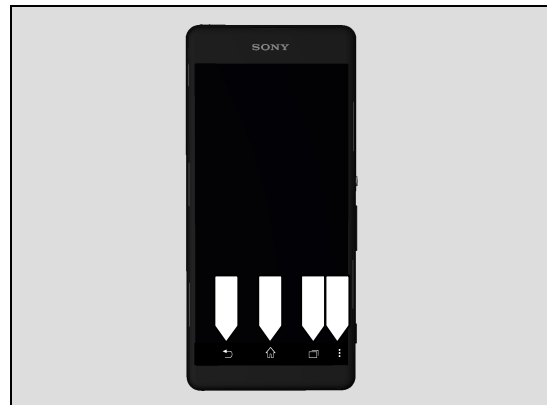
## Problem Areas

### 1.2 Keys

#### 1.2.1 Back, Menu, Home and Multitask Keys

**Action:**

1. Refer to section 1.3 'Touch Screen'.
2. Replace Main PBA.



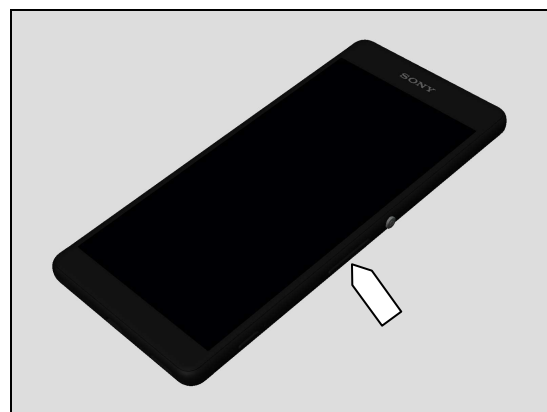
#### 1.2.2 Volume Key

**Check:**

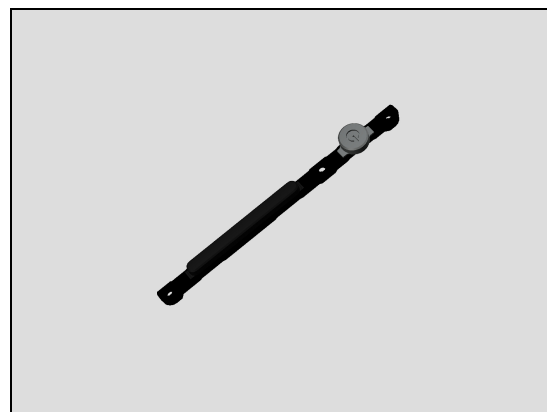
Inspect the external area of the Volume Key.

**Action:**

1. If dirty – clean it.



2. If damaged – replace the Key Power\_Volume.

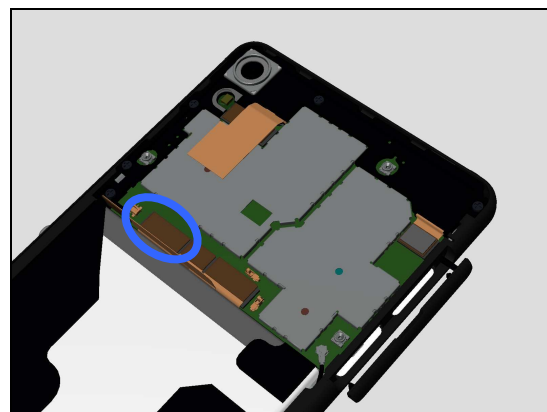


**Check:**

Inspect the BtB connector of Side Key FPC Assy to Main PBA.

**Action:**

1. If not properly connected – disconnect and reconnect it.
2. If dirty or oxidized – clean it.



## Problem Areas: Keys

3. If the Side Key FPC Assy is damaged – replace it.
4. Replace Main PBA.

### Check:

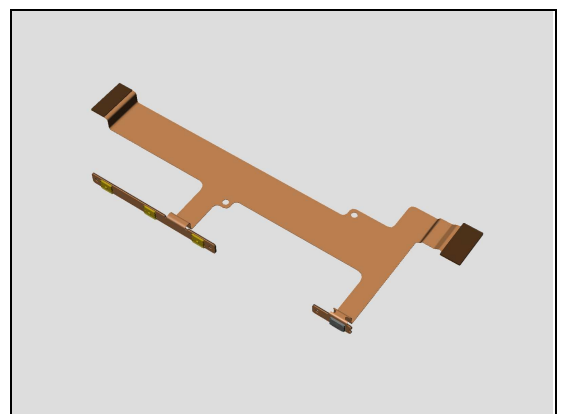
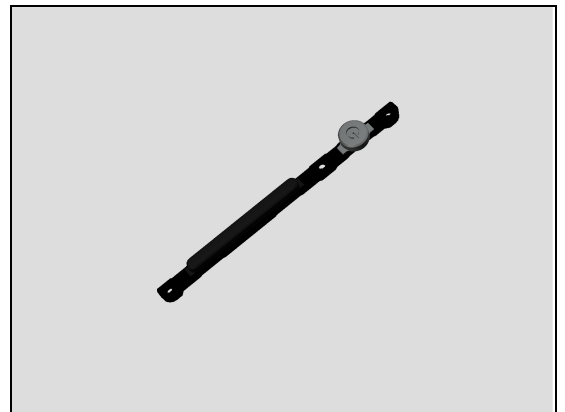
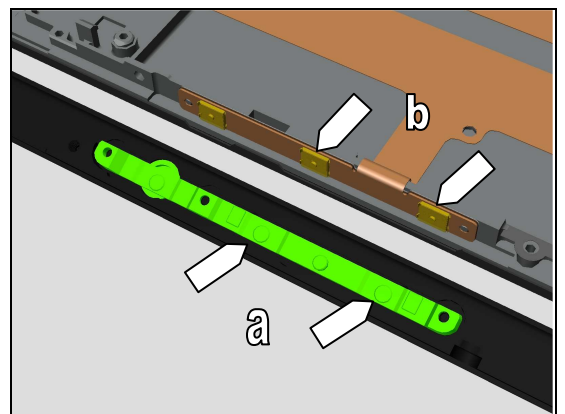
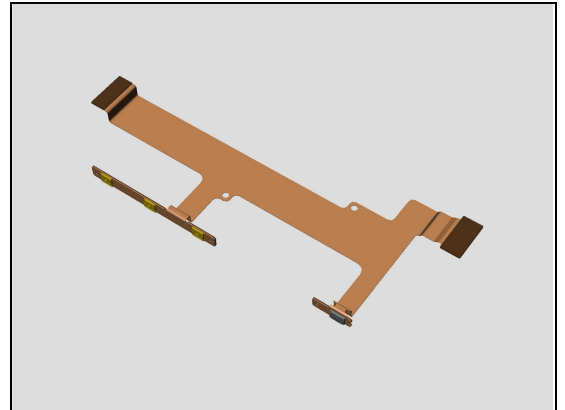
Inspect the condition of Volume Key rubber (a) and Volume Key switch (b).

### Action:

1. If dirty – clean them.

2. If the Volume Key rubber is damaged – replace the Key Power\_Volume.

3. If the volume key switch is damaged – replace the Side Key FPC Assy.





## Problem Areas: Keys

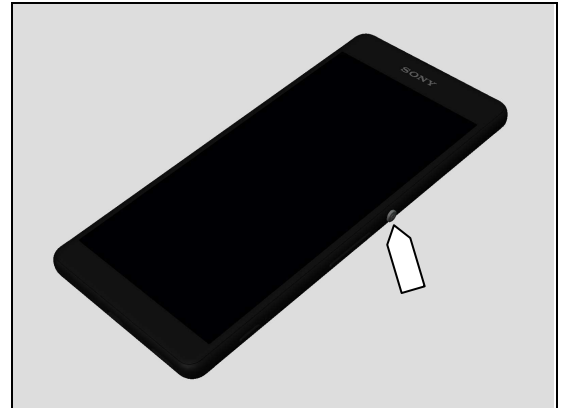
### 1.2.3 On/Off Key

**Check:**

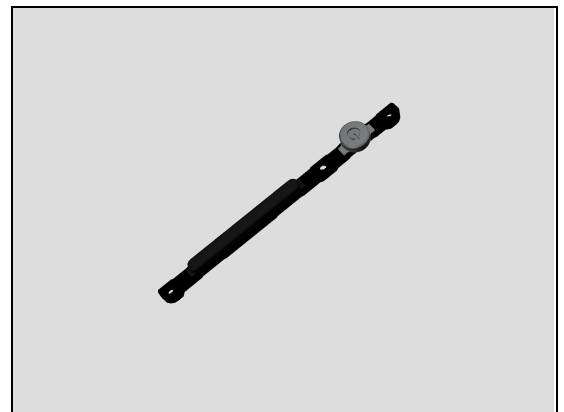
Inspect the external area of the On/Off Key.

**Action:**

1. If dirty – clean it.



2. If damaged – replace the Key Power\_Volume.



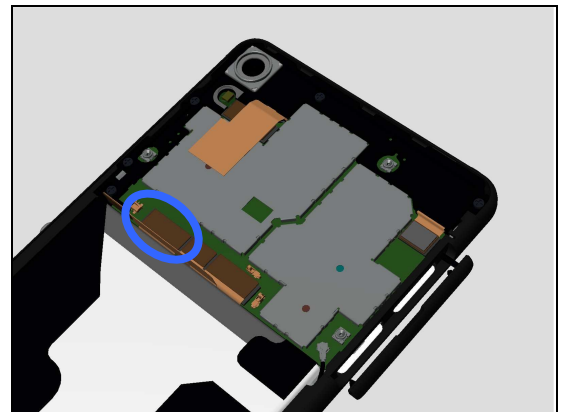
**Check:**

Inspect the BtB connector of Side Key FPC Assy to Main PBA.

**Action:**

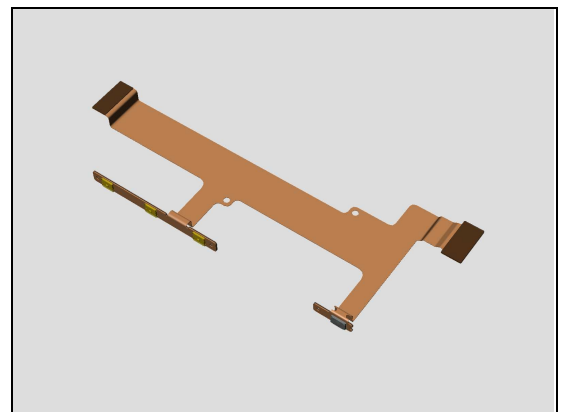
1. If not properly connected – disconnect and reconnect it.

2. If dirty or oxidized – clean it.



3. If the Side Key FPC Assy is damaged – replace it.

4. Replace Main PBA.



## Problem Areas: Keys

### Check:

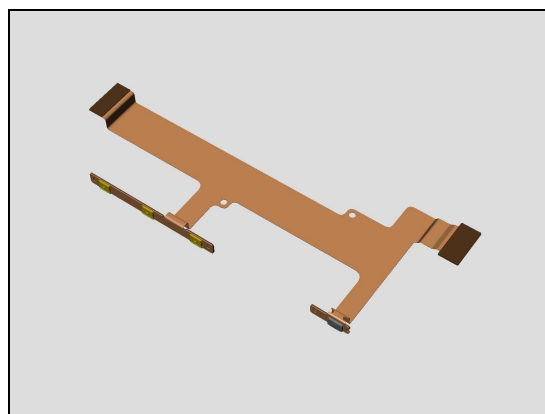
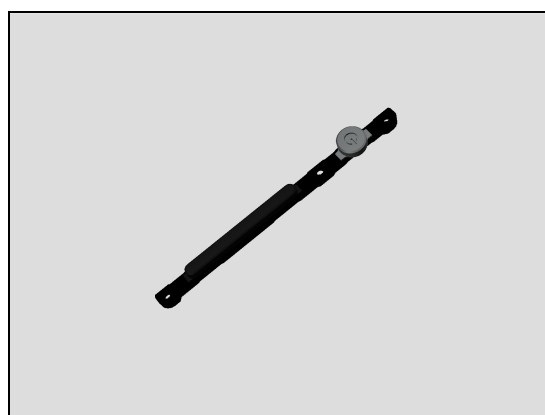
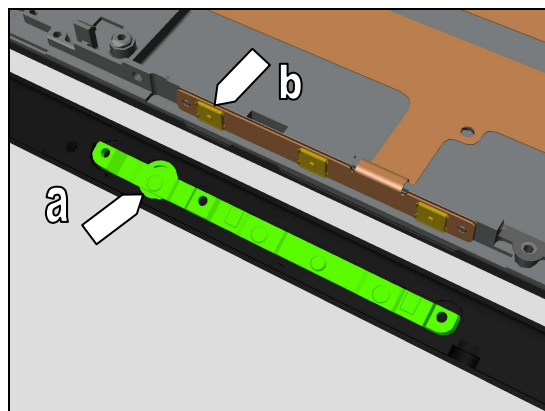
Inspect the condition of the On/Off Key rubber (a) and On/Off Key switch (b).

### Action:

1. If dirty – clean them.

2. If the On/Off Key rubber is damaged – replace the Key Power\_Volume.

3. If the On/Off key switch is damaged – replace the Side Key FPC Assy.



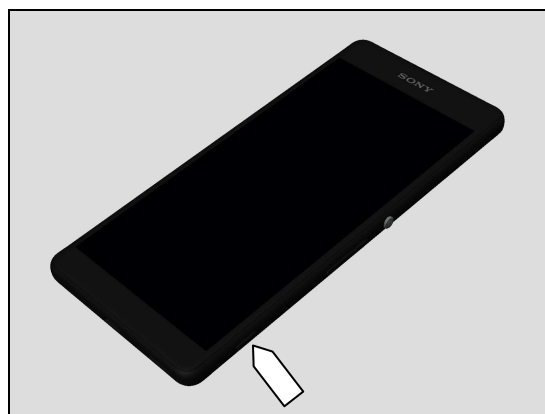
## 1.2.4 Camera Key

### Check:

Inspect the external area of the Camera Key.

### Action:

1. If dirty – clean it.



## Problem Areas: Keys

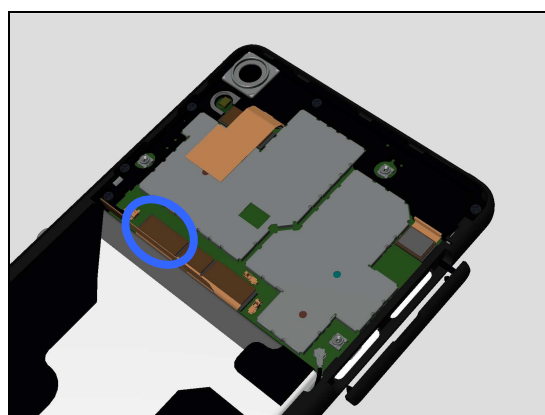
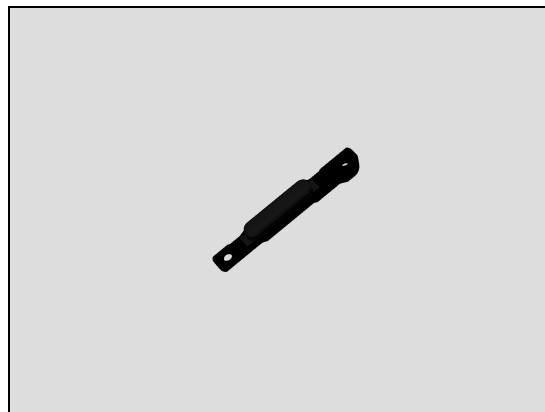
2. If damaged – replace the Key Camera.

### Check:

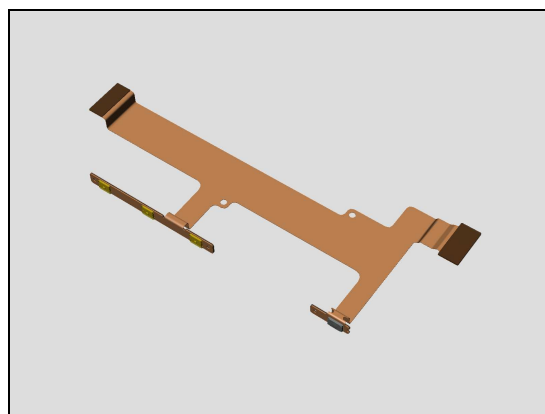
Inspect the BtB connector of Side Key FPC Assy to Main PBA.

### Action:

1. If not properly connected – disconnect and reconnect it.
2. If dirty or oxidized – clean it.



3. If the Side Key FPC Assy is damaged – replace it.
4. Replace Main PBA.

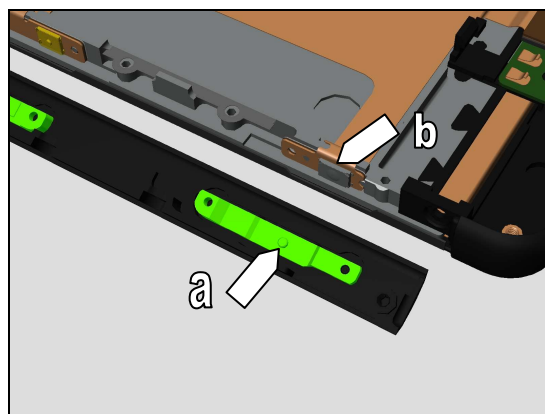


### Check:

Inspect the condition of the Camera Key rubber (a) and Camera Key switch (b).

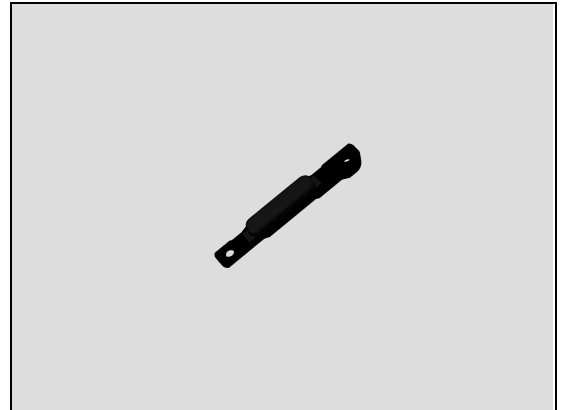
### Action:

1. If dirty – clean them.

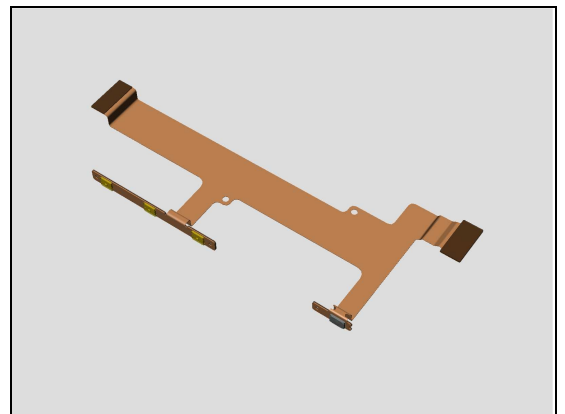


## Problem Areas: Keys

2. If the Camera Key rubber is damaged – replace the Key Camera.



3. If the On/Off key switch is damaged – replace the Side Key FPC Assy.



## Problem Areas

### 1.3 Touch Screen

#### 1.3.1 Touch Screen malfunction

**Check:**

Inspect the touch screen of the Display Cover Assy.

**Action:**

1. If dirty – clean it.

2. If scratched or damaged – replace the Display Cover Assy.

**Check:**

Inspect the BtB connector of touch panel FPC to Main PBA.

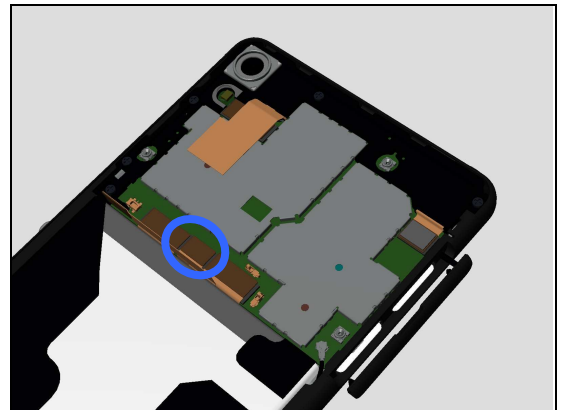
**Action:**

1. If not properly connected – disconnect and reconnect it.

2. If dirty or oxidized – clean it.

3. If the touch panel FPC is damaged – replace the Display Cover Assy.

4. Replace Main PBA.



## Problem Areas

### 1.4 Display

#### 1.4.1 Graphics & Illumination

**Check:**

Check whether the phone vibrates after the on/off key has been pressed.

**Action:**

1. If the activation described above is not detected, refer to section 1.1 'Power'.

2. If the Display Cover Assy is damaged – replace it.

**Check:**

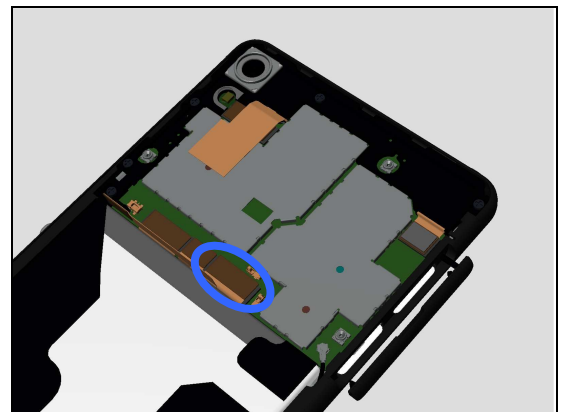
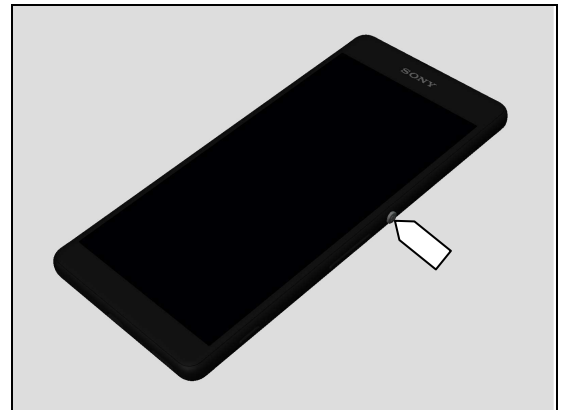
Inspect the BtB connector of LCM FPC to Main PBA.

**Action:**

1. If not properly connected – disconnect and reconnect it.
2. If dirty or oxidized – clean it.

3. If the LCM FPC is damaged – replace the Display Cover Assy.

4. Replace Main PBA.



## Problem Areas

### 1.5 LED/Illumination

#### 1.5.1 LED/Illumination

**Check:**

Inspect external window area of Notification LED on the Display Cover Assy.

**Action:**

1. If dirty – clean it.

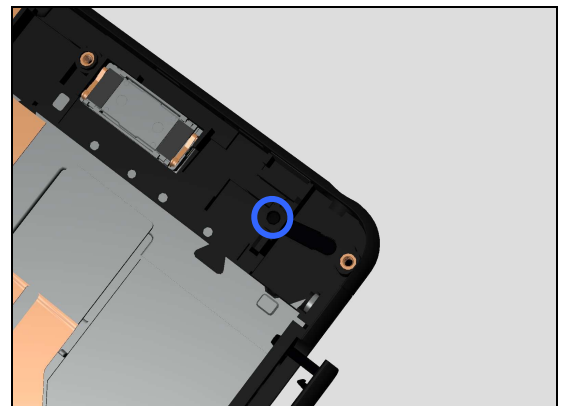


**Check:**

Inspect the Light Guide of Notification LED.

**Action:**

1. If dirty – clean it.

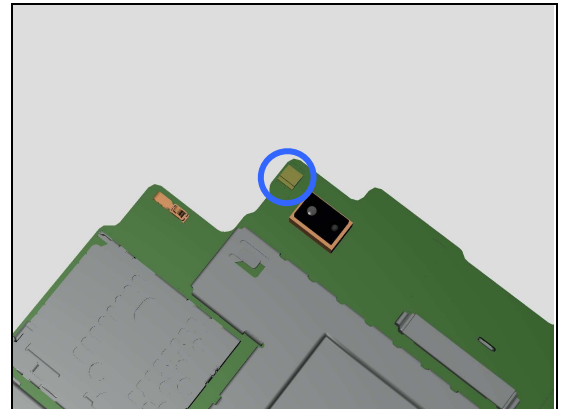


**Check:**

Inspect the LED on Main PBA.

**Action:**

1. If dirty or oxidized – clean it.
2. Replace Main PBA



## Problem Areas

### 1.6 Speaker

#### 1.6.1 Loudspeaker

**Check:**

Inspect the Loudspeaker external port on the Display Cover Assy.

**Action:**

1. If clogged – clean it.



2. If damaged – replace the Display Cover Assy.

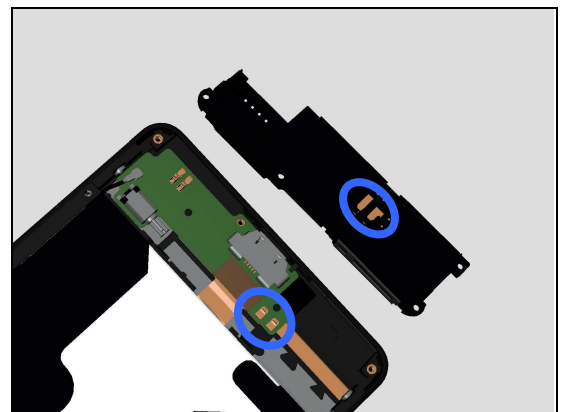


**Check:**

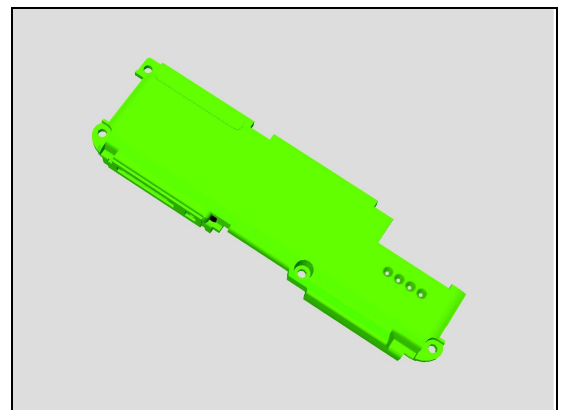
Inspect the contact pads on the Main Antenna Speaker Assy and the contact pins on the Sub PBA Assy.

**Action:**

1. If pins and pads dirty – clean them.



2. If contact pads or loudspeaker are damaged – replace the Main Antenna Speaker Assy.





## Problem Areas: Speaker

3. If contact pins are damaged – Replace Sub PBA Assy.

**Check:**

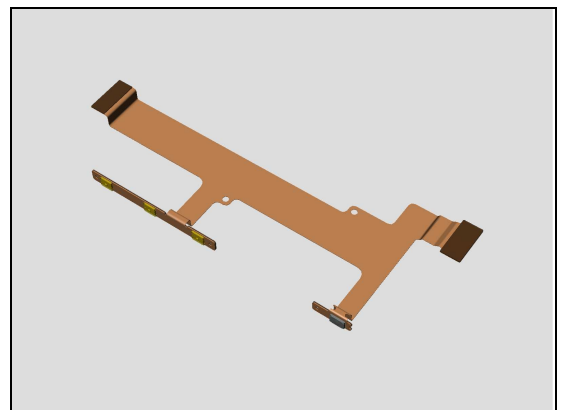
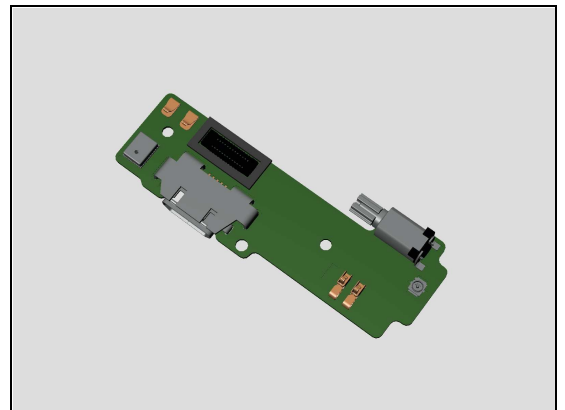
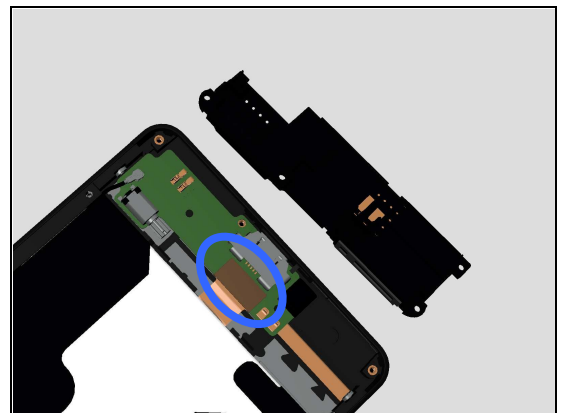
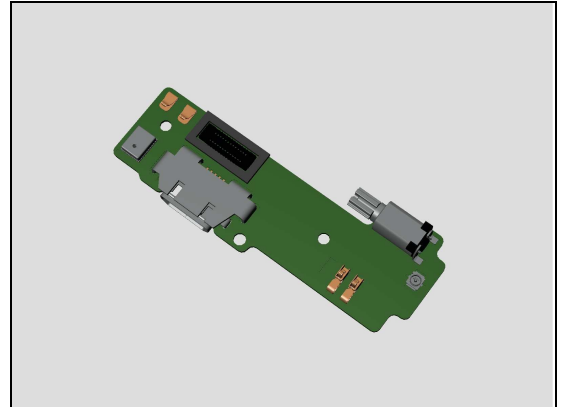
Inspect the BtB connector of the Side key FPC Assy to Sub PBA Assy.

**Action:**

1. If not properly connected – disconnect and reconnect it.
2. If dirty or oxidized – clean it.

3. If Sub PBA Assy is damaged – Replace it.

4. If the Side Key FPC Assy is damaged – Replace it.

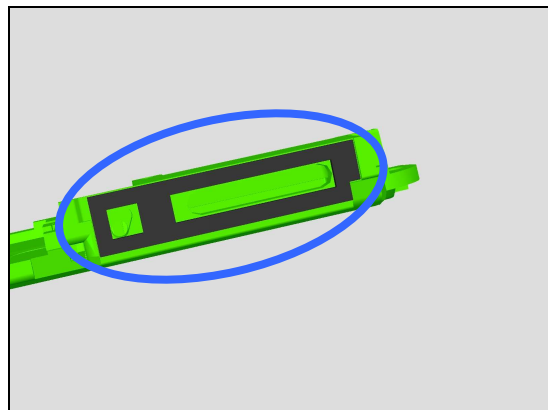


## Problem Areas: Speaker

### Check:

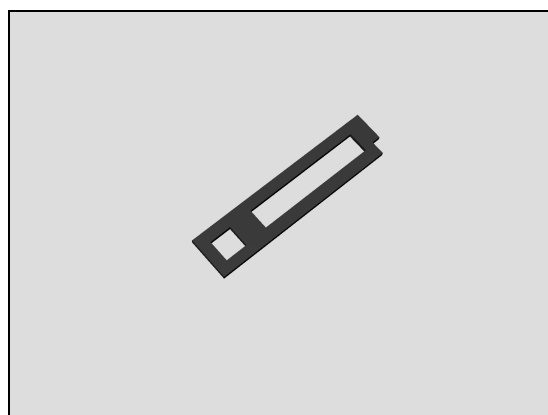
Inspect the Sponge Speaker\_Main MIC on the Main Antenna Speaker.

.



### Action:

1. If damaged – replace the Sponge Speaker\_Main MIC.

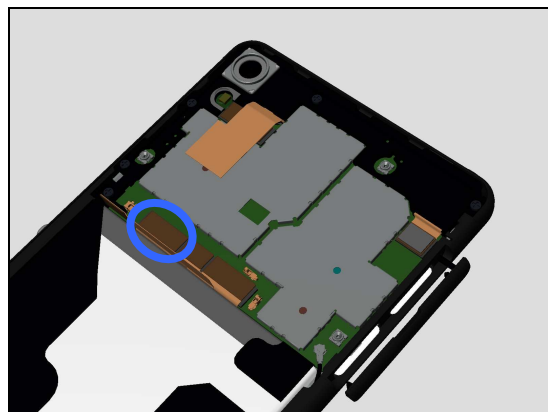


### Check:

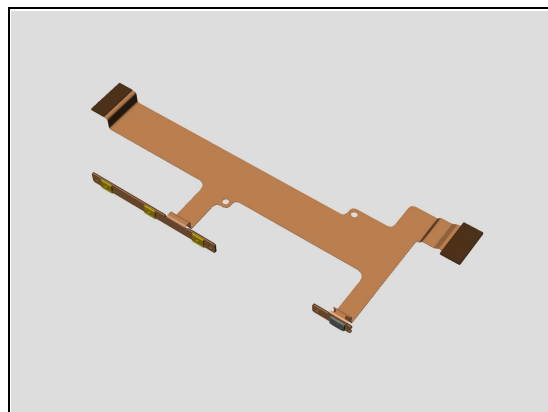
Inspect the BtB connector of Side Key FPC Assy to Main PBA.

### Action:

1. If not properly connected – disconnect and reconnect it.
2. If dirty or oxidized – clean it.



3. If the Side Key FPC Assy is damaged – replace it.
4. Replace Main PBA.



## Problem Areas

### 1.7 Earphone

#### 1.7.1 Receiver

**Check:**

Inspect the external port of Receiver on the Display Cover Assy.

**Action:**

1. If clogged – clean it.

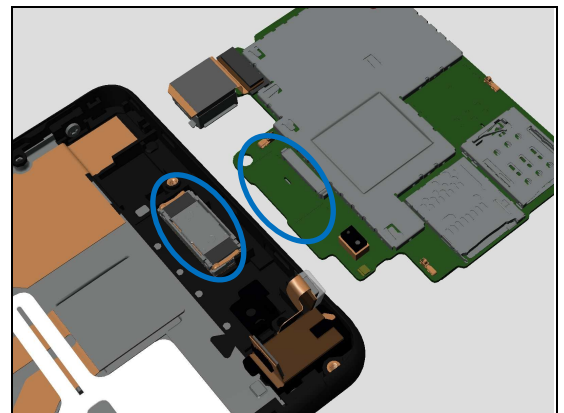


**Check:**

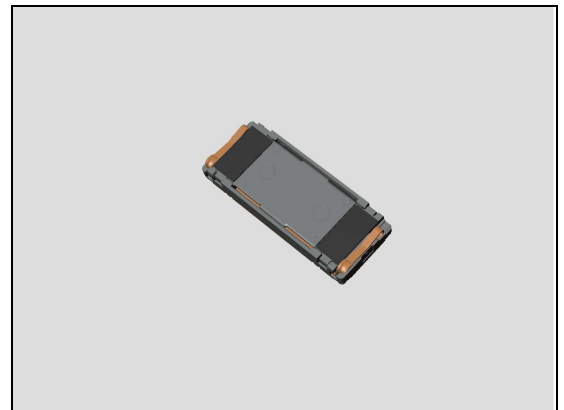
Inspect the contact pads on the Main PBA and the contact pins on the Receiver.

**Action:**

1. If dirty – clean them.



2. If the contact pins of the Receiver or the Receiver are damaged – replace it.
3. Replace Main PBA.



## Problem Areas

### 1.8 Microphone

#### 1.8.1 Primary Microphone

**Check:**

Inspect the Primary Microphone's external port on the Display Cover Assy.

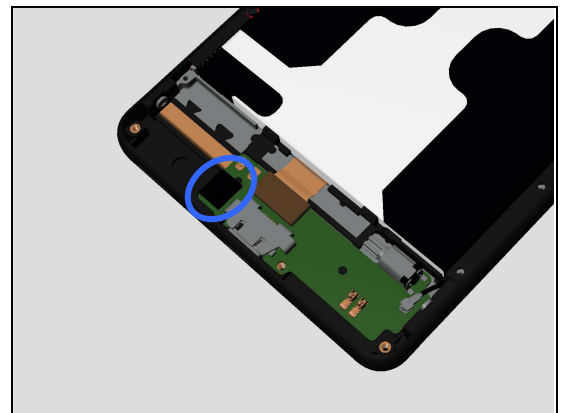
**Action:**

1. If clogged – clean it.



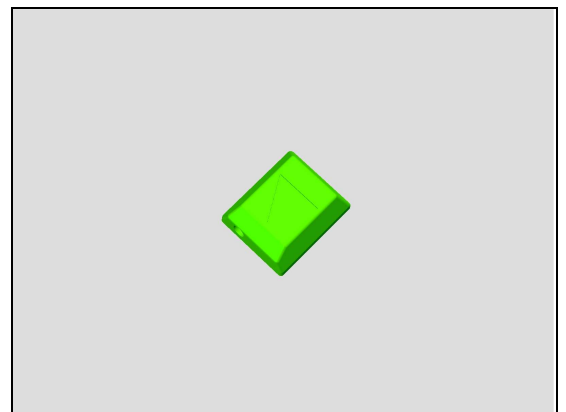
**Check:**

Inspect Rubber Main MIC and main Mic.

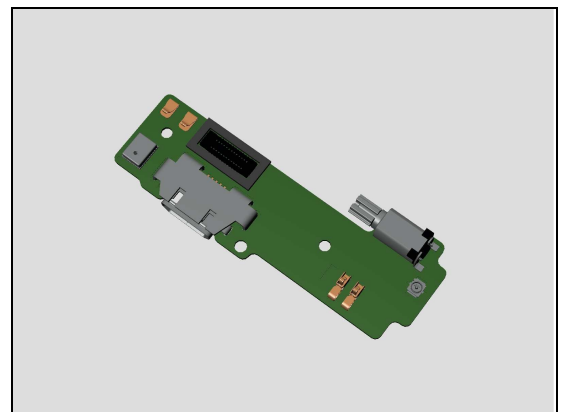


**Action:**

1. If the Rubber Main MIC is damaged – replace it.



2. If the Main MIC is damaged – replace Sub PBA Assy.



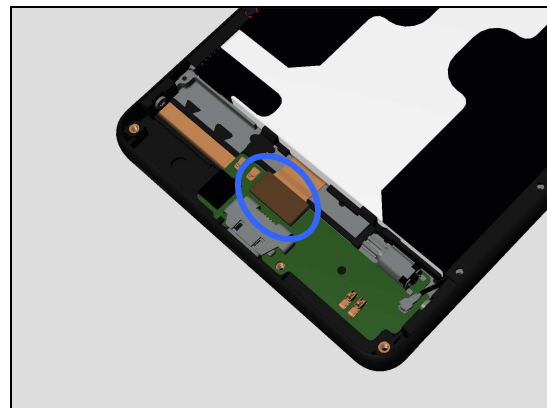
## Problem Areas: Microphone

### Check:

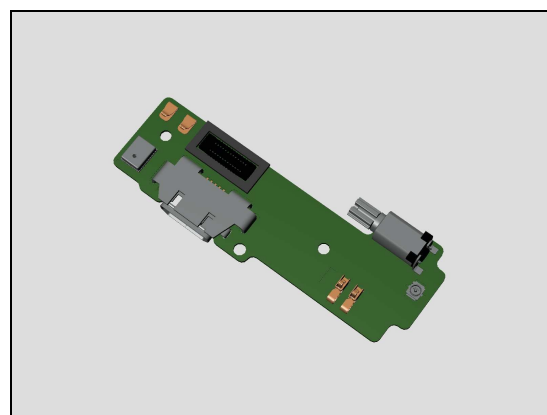
Inspect the BtB connector of Side Key FPC Assy to Sub PBA Assy.

### Action:

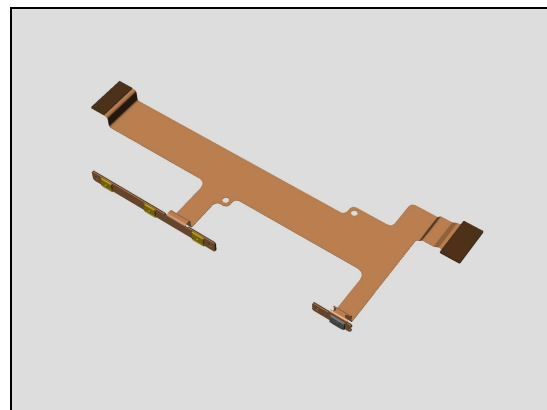
1. If not properly connected – disconnect and reconnect it.
2. If dirty or oxidized – clean it.



3. If Sub PBA Assy is damaged – replace it.



4. If Side Key FPC Assy is damaged – replace it.

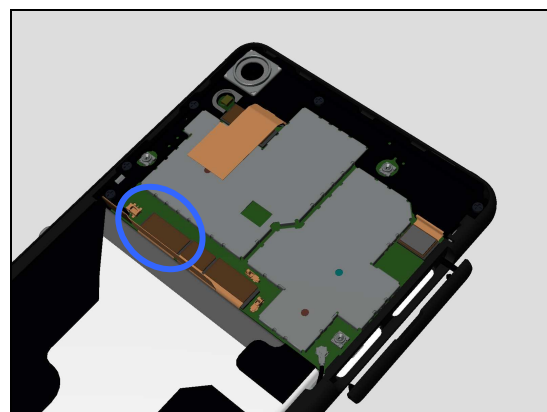


### Check:

Inspect the BtB connector of Side Key FPC Assy to Main PBA.

### Action:

1. If not properly connected – disconnect and reconnect it.
2. If dirty or oxidized – clean it.



## Problem Areas: Microphone

3. If the Side Key FPC Assy is damaged – replace it.
4. Replace Main PBA.

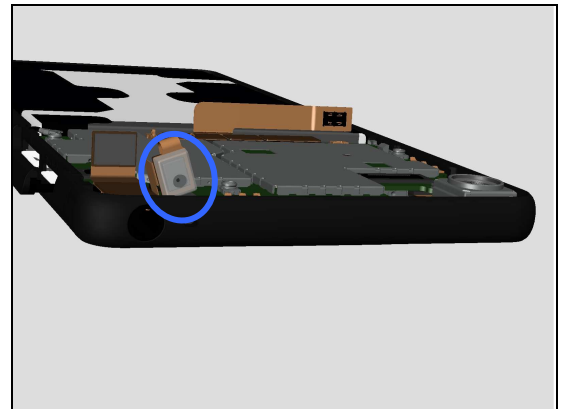
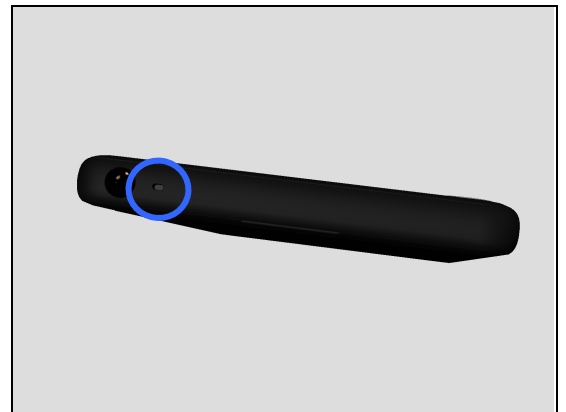
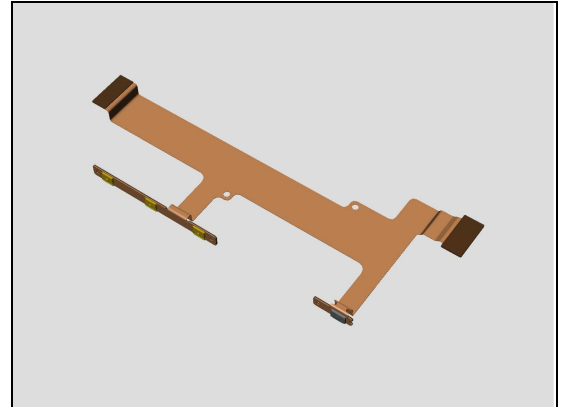
### 1.8.2 Secondary Microphone

**Check:**

Inspect the external port of secondary microphone on the Display Cover Assy.

**Action:**

1. If clogged – clean it.

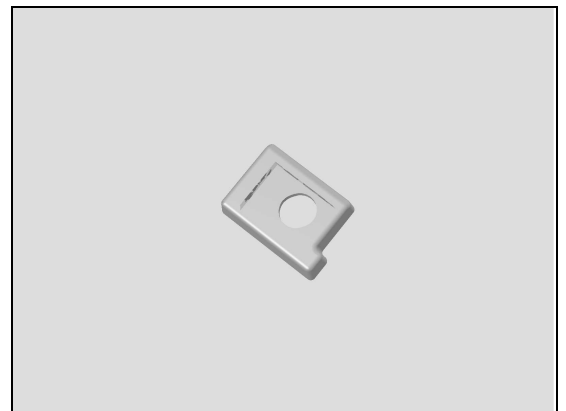


**Check:**

Inspect the Rubber 2nd MIC.

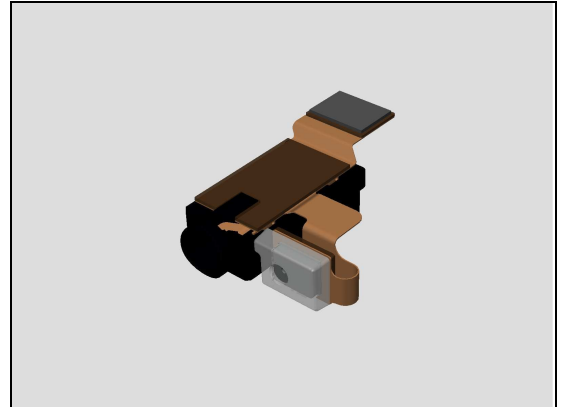
**Action:**

1. If Rubber 2nd MIC is not properly attached or damaged – replace the Rubber 2nd MIC.



## Problem Areas: Microphone

2. If 2nd MIC is damaged – replace the Audio Jack Assy.

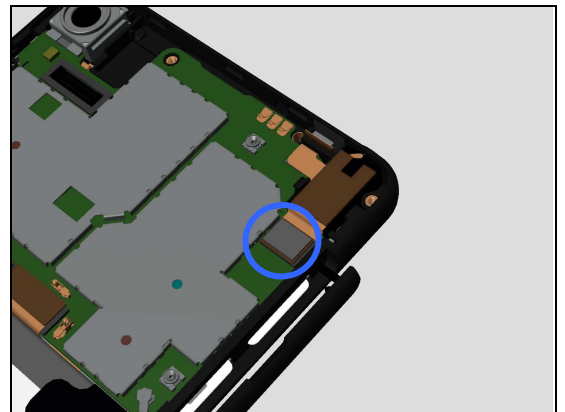


**Check:**

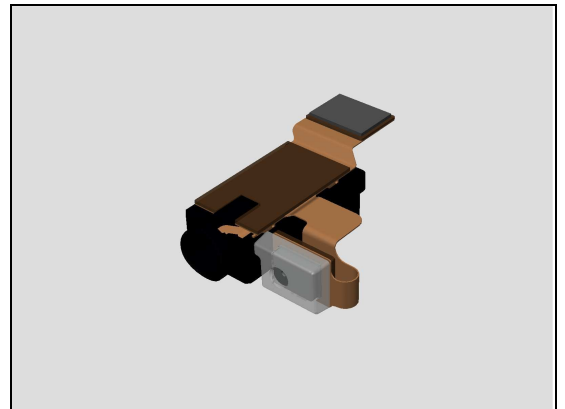
Inspect the BtB connector of Audio Jack Assy to Main PBA.

**Action:**

1. If not properly connected – disconnect and reconnect it.
2. If dirty or oxidized – clean it.



3. If the Audio Jack Assy is damaged – replace it.
4. Replace Main PBA.



## Problem Areas

### 1.9 Vibrator

#### 1.9.1 Vibrator not generating alerts

**Check:**

Inspect the Vibrator.

**Action:**

1. If the Vibrator is damaged – replace the Sub PBA Assy.

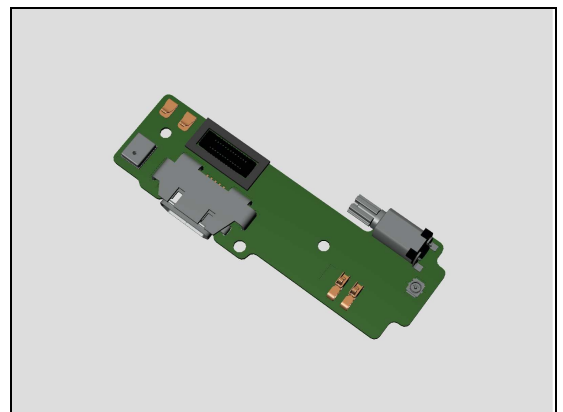
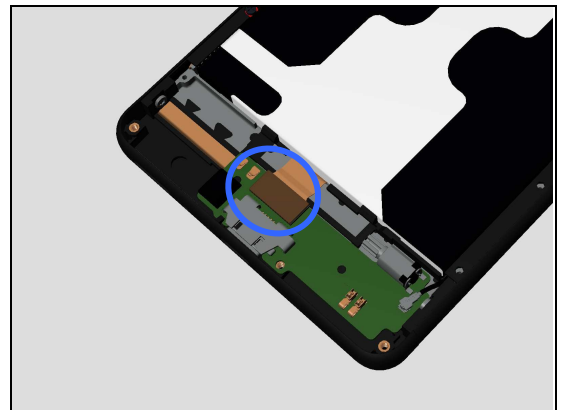
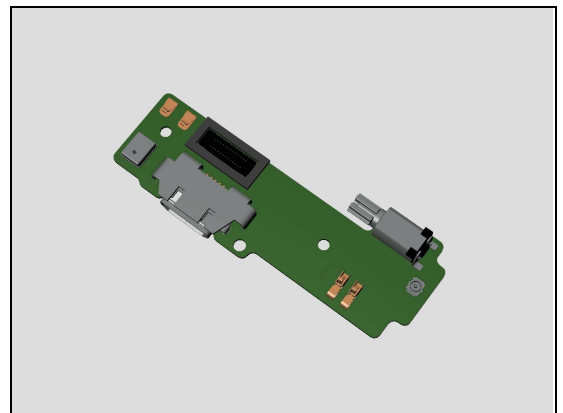
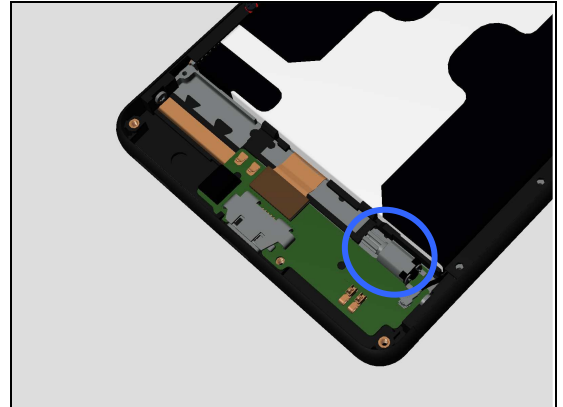
**Check:**

Inspect the BtB connector of Side key FPC Assy to Sub PBA Assy.

**Action:**

1. If not properly connected – disconnect and reconnect it.  
2. If dirty or oxidized – clean it.

3. If Sub PBA Assy is damaged – replace it.





## Problem Areas: Vibrator

4. If Side Key FPC Assy is damaged – replace it.

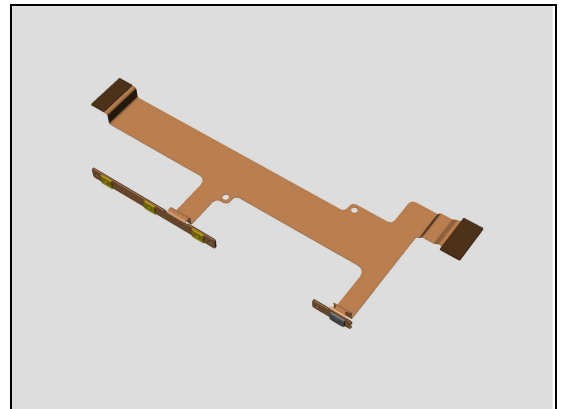
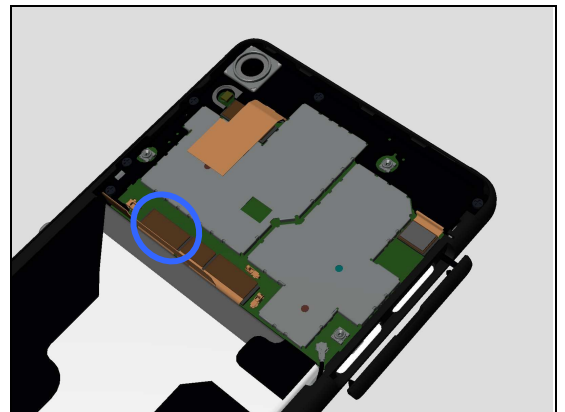
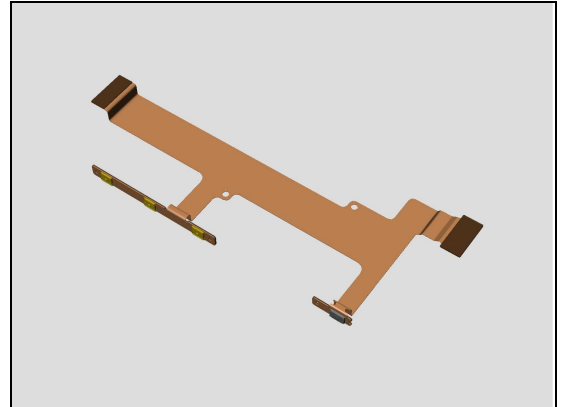
### Check:

Inspect the BtB connector of Side Key FPC Assy to Main PBA.

### Action:

1. If not properly connected – disconnect and reconnect it.
2. If dirty or oxidized – clean it.

3. If Side Key FPC Assy is damaged – replace it.
- 4 Replace Main PBA.



## Problem Areas

### 1.10 Camera

#### 1.10.1 Main Camera

**Check:**

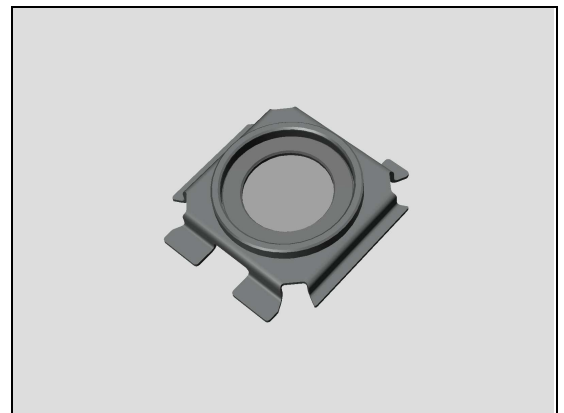
Inspect the external area of camera window.

**Action:**

1. If dirty – clean it.



2. If scratched or damaged – replace the Main Camera Lens Assy.

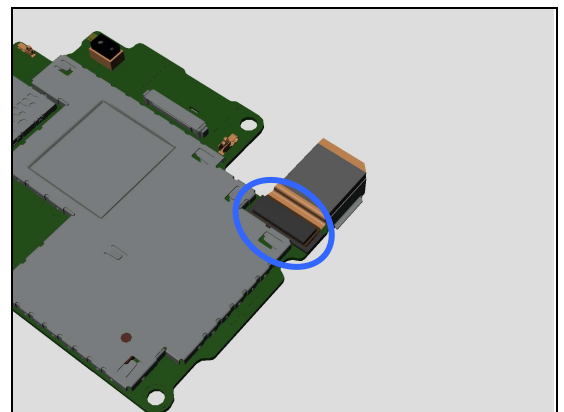


**Check:**

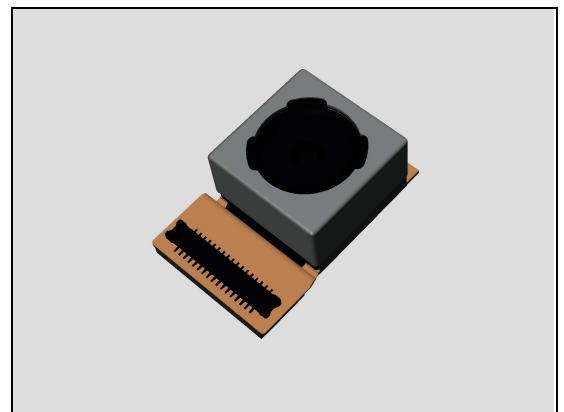
Inspect the BtB connector of Main Camera to Main PBA.

**Action:**

1. If not properly connected – disconnect and reconnect it.  
2. If dirty or oxidized – clean it.



3. If the BtB connector or the Main Camera is damaged – replace the Main Camera.  
4. Replace Main PBA.



## Problem Areas: Camera

### 1.10.2 Video Call Camera defects

**Check:**

Inspect the external area of the Front camera window.

**Action:**

1. If dirty – clean it.



2. If scratched or damaged – replace the Display Cover Assy.

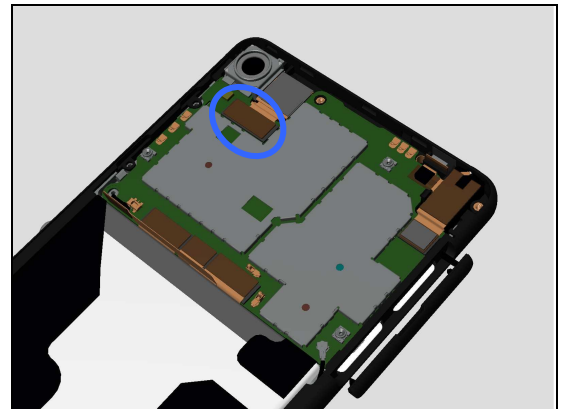


**Check:**

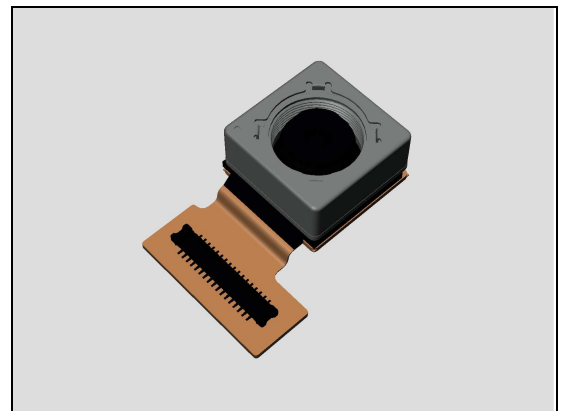
Inspect the BtB connector of Front Camera to Main PBA.

**Action:**

1. If not properly connected – disconnect and reconnect it.
2. If dirty or oxidized – clean it.



3. If the Front Camera is damaged – replace the Front Camera.
4. Replace Main PBA.



## Problem Areas

### 1.11 Flash LED

#### 1.11.1 Flash LED not flashing

**Check:**

Inspect the flash LED lens.

**Action:**

1. If dirty – clean it.

2. If scratched or damaged – replace the Antenna Assy  
DIV/BT/WIFI/GPS.

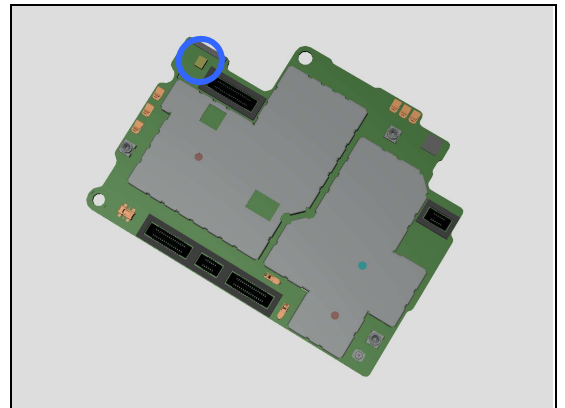
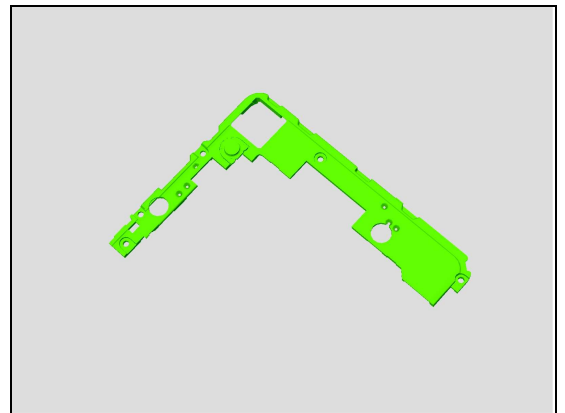
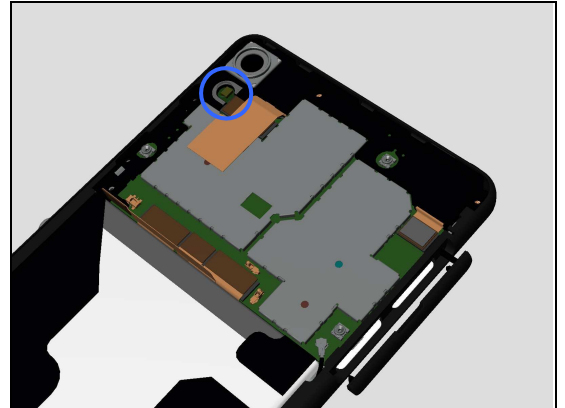
**Check:**

Inspect the Flash LED on Main PBA.

**Action:**

1. If dirty – clean it.

2. If Flash LED is damaged – Replace Main PBA.



## Problem Areas

### 1.12 Bluetooth and WLAN

#### 1.12.1 Bluetooth or WLAN connection failure

**Check:**

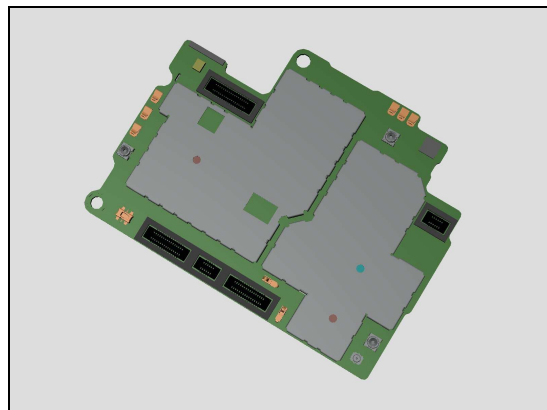
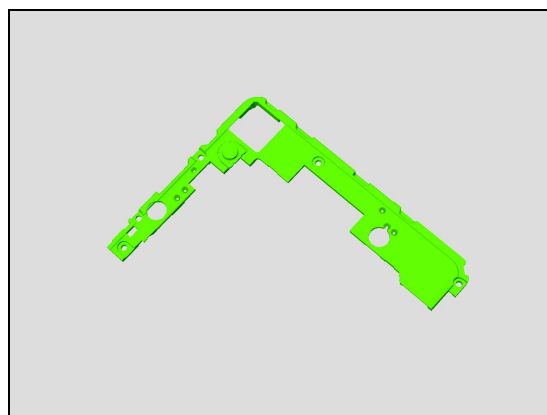
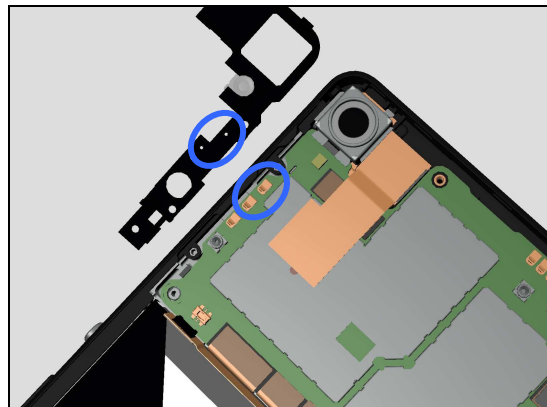
Inspect the contact pads on Antenna Assy  
DIV/BT/WIFI/GPS and the contact pins on main PBA.

**Action:**

1. If dirty or oxidized – clean the pads and pins.

2. If the contact pads on Antenna Assy DIV/BT/WIFI/GPS  
are damaged – replace the Antenna Assy  
DIV/BT/WIFI/GPS.

3. If the contact pins on Main PBA is damaged – replace  
Main PBA.



## Problem Areas

### 1.13 NFC

#### 1.13.1 NFC malfunctions

**Check:**

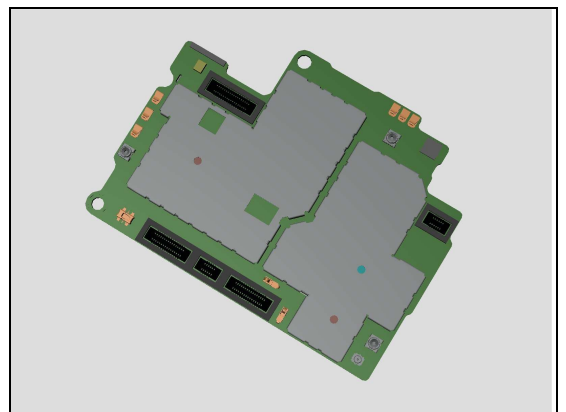
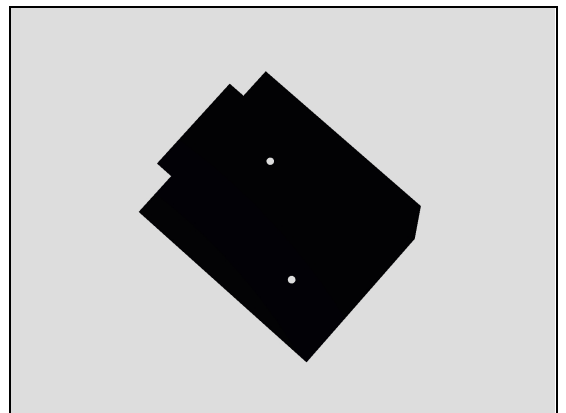
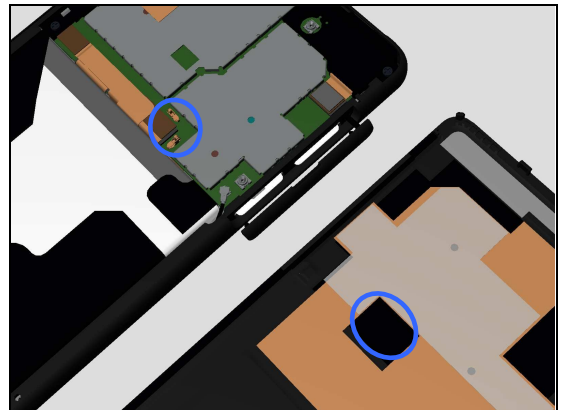
Inspect the NFC antenna contact pads on Battery Cover Assy and the contact pins on Main PBA.

**Action:**

1. If dirty or oxidized – clean the pads and pins.

2. If the NFC antenna contact pads are damaged – replace the NFC Antenna.

3. If the contact pins on main PBA are damaged – replace Main PBA.



## Problem Areas

### 1.14 GPS

#### 1.14.1 GPS malfunctions

**Check:**

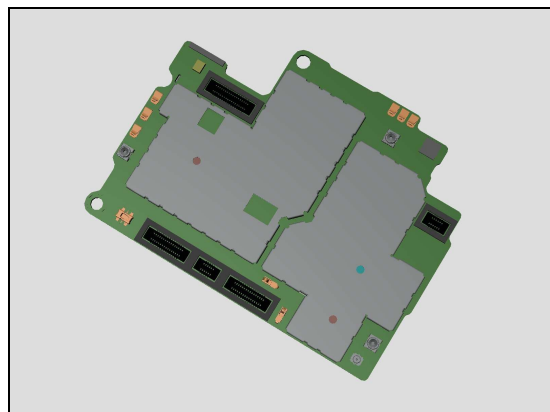
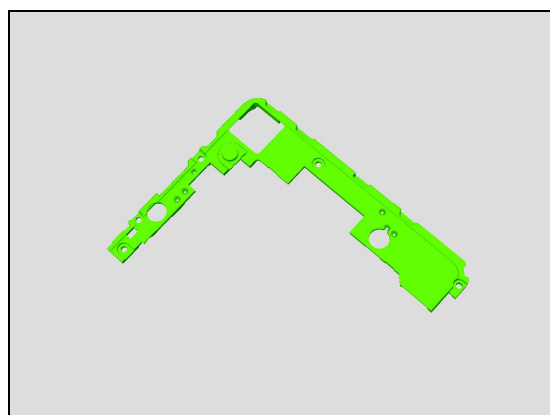
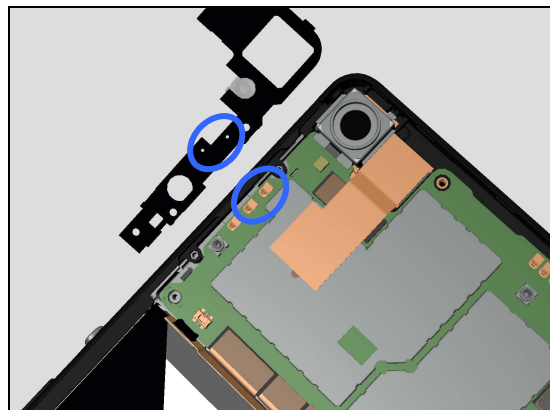
Inspect the contact pads on Antenna Assy  
DIV/BT/WIFI/GPS and the contact pins on main PBA.

**Action:**

1. If dirty or oxidized – clean the pads and pins.

2. If the contact pads on Antenna Assy DIV/BT/WIFI/GPS  
are damaged – replace the Antenna Assy  
DIV/BT/WIFI/GPS.

3. If the contact pins on Main PBA is damaged – replace  
Main PBA.



## Problem Areas

### 1.15 Compass

#### 1.15.1 Compass fails

**Action:**

1. Replace Main PBA.



## Problem Areas

### 1.16 Accelerometer

#### 1.16.1 Accelerometer test fails

**Action:**

1. Follow the 1289-2983 Sony Mobile Repair Application – mechanical to run the Accelerometer Calibration.
2. Replace Main PBA.

## Problem Areas

### 1.17 Gyroscope

#### 1.17.1 Gyroscope test fails

N/A.

## Problem Areas

### 1.18 Ambient Light Sensor

#### 1.18.1 Light Sensor malfunctions

Reset the Light sensor default value by re-flashing.  
Generally you do not need to use the 1289-2983 Sony Mobile Repair Application –mechanical Light Sensor default value reset function.

**Check:**

Inspect the external window area of light sensor on the Display Cover Assy.

**Action:**

1. If dirty – clean it.
2. If scratched or damaged – replace the Display Cover Assy.

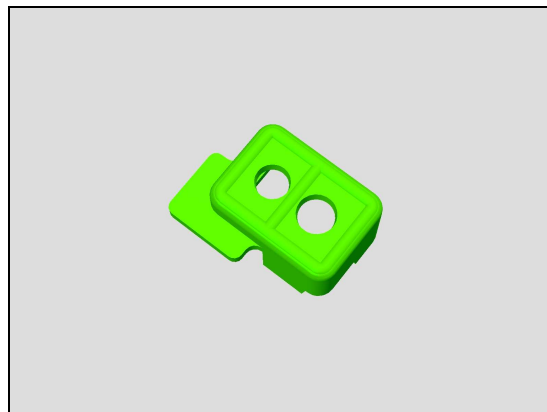
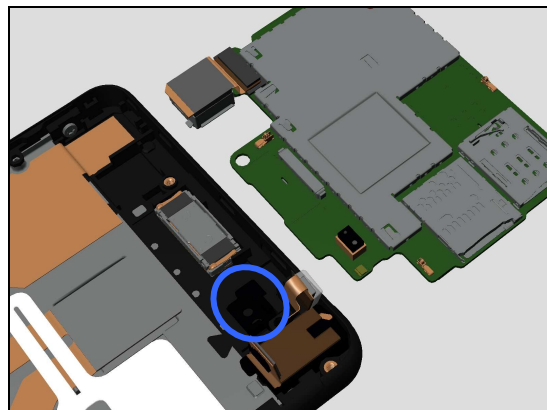
**Check:**

Inspect the Rubber PL Sensor.

**Action:**

1. If not properly assembled – reassemble it.

2. If damaged – replace the Rubber PL Sensor.



## Problem Areas: Ambient Light Sensor

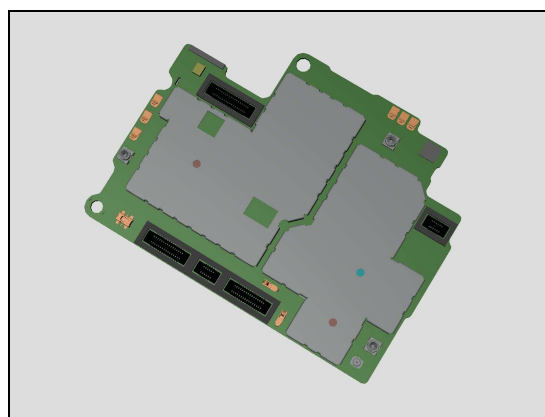
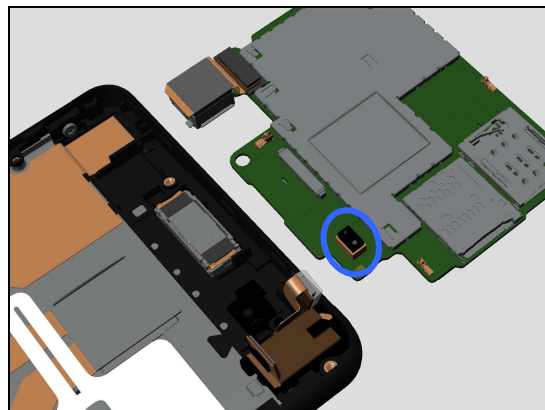
**Check:**

Inspect the light sensor on the Main PBA.

**Action:**

1. If dirty – clean it.

2. If damaged – Replace Main PBA.



## Problem Areas

### 1.19 Proximity Switch

#### 1.19.1 Proximity switch malfunctions

Follow the 1289-2983 Sony Mobile Repair Application – mechanical to run the Proximity Calibration.

**Check:**

Inspect the external window area of Proximity sensor on the Display Cover Assy.

**Action:**

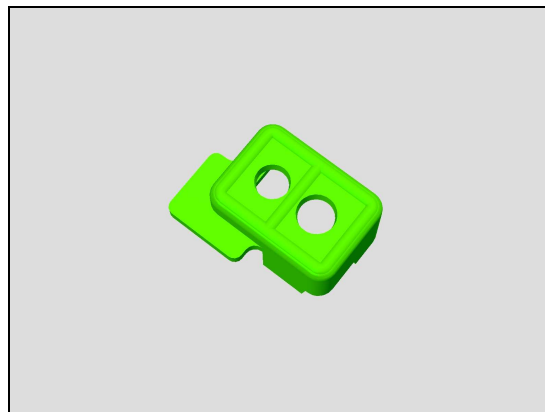
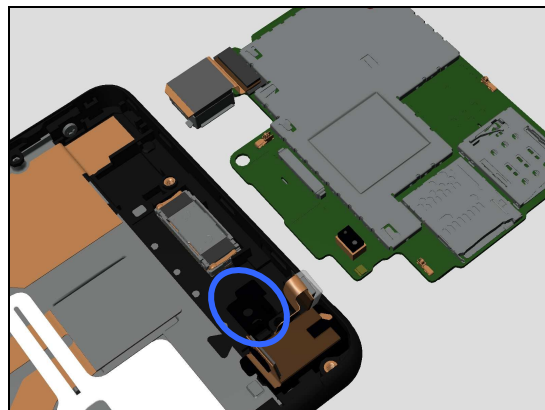
1. If dirty – clean it.
2. If scratched or damaged – replace the Display Cover Assy.

**Check:**

Inspect the Rubber PL Sensor.

**Action:**

1. If not properly assembled – reassemble it.
2. If damaged – replace the Rubber PL Sensor.



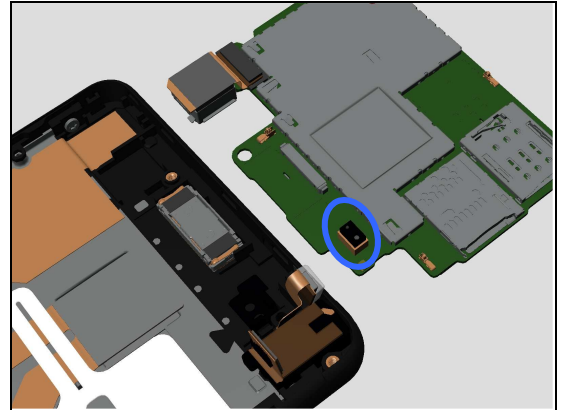
## Problem Areas: Proximity Switch

**Check:**

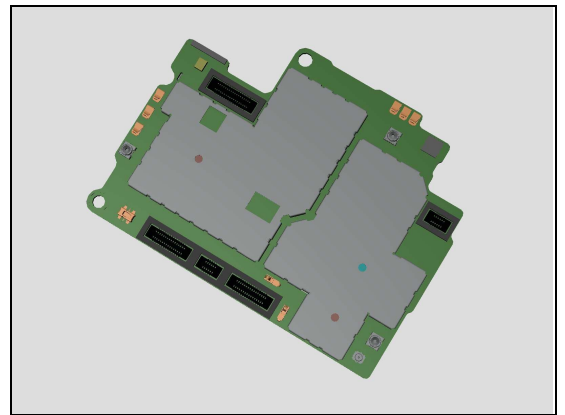
Inspect the Proximity sensor on the Main PBA.

**Action:**

1. If dirty – clean it.



2. If damaged – Replace Main PBA.



## Problem Areas

### 1.20 Hall Sensor

#### 1.20.1 Hall Sensor test fails

Replace Main PBA.

## Problem Areas

### 1.21 Real Time Clock

#### 1.21.1 Real time clock test fails

**Action:**

Replace Main PBA.



## Problem Areas

### 1.22 Total call time

#### 1.22.1 Total call time fails

**Action:**

Replace Main PBA.

## Problem Areas

### 1.23 External Memory

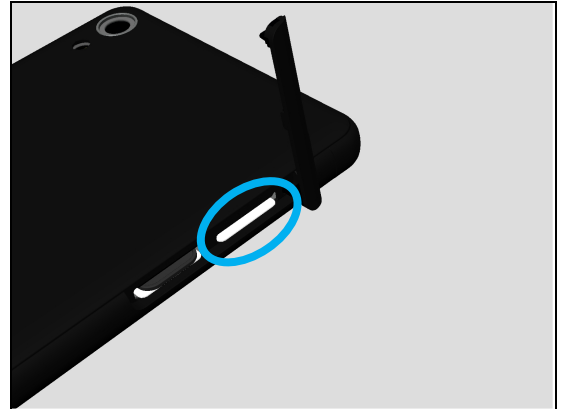
#### 1.23.1 Memory Card not detected

**Check:**

Inspect the external port of the memory card holder.

**Action:**

If dirty or clogged – clean the external port.

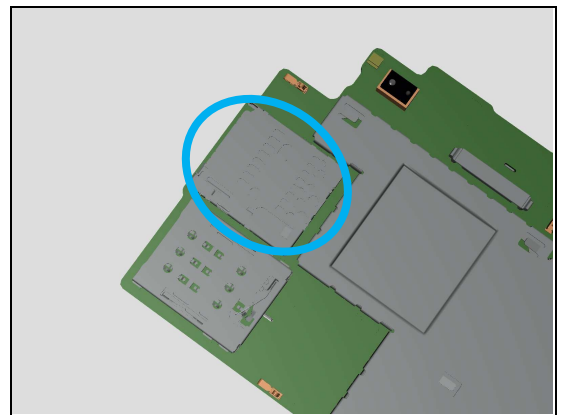


**Check:**

Inspect the memory card holder on Main PBA.

**Action:**

1. If dirty or clogged – clean the holder.
2. Replace Main PBA.



## Problem Areas

### 1.24 Security

#### 1.24.1 Security fails

**Action:**

Replace Main PBA.

## Problem Areas

### 1.25 FM Radio

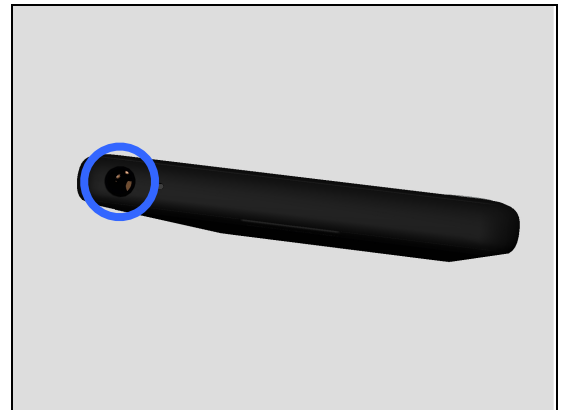
#### 1.25.1 No/Poor FM Radio reception

**Check:**

Inspect the external port of the Audio Jack Assy.

**Action:**

1. If dirty or oxidized – clean it.

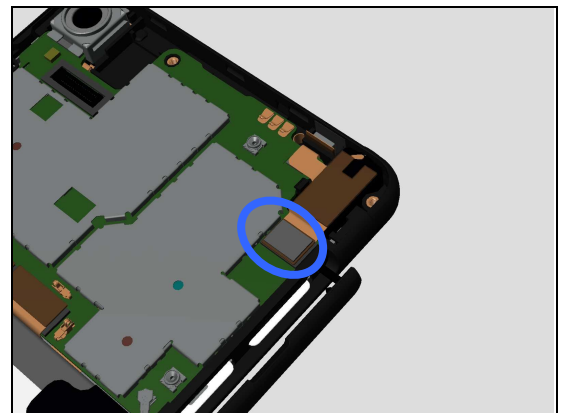


**Check:**

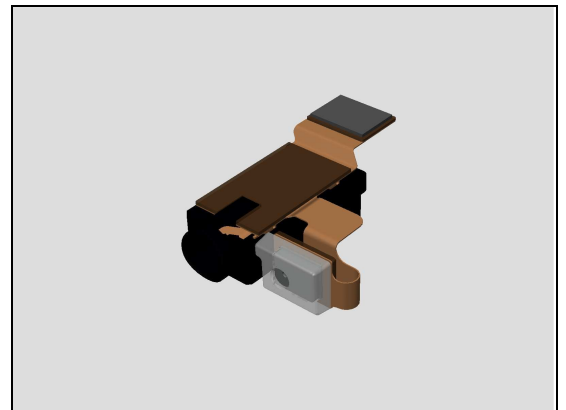
Inspect the BtB connector of Audio Jack Assy to Main PBA.

**Action:**

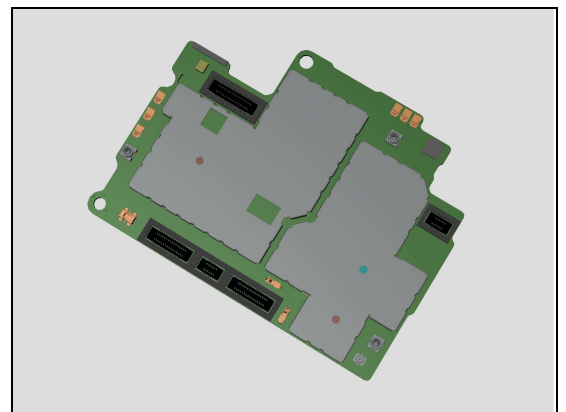
1. If not properly connected – disconnect and reconnect it.
2. If dirty or oxidized – clean it.



3. If the Audio Jack Assy is damaged – replace the Audio Jack Assy.



4. Replace Main PBA.



## Problem Areas

### 1.26 Verify Certificates

#### 1.26.1 Verify Certificates fails

**Action:**

N/A.

## Problem Areas

### 1.27 Network & Signal

#### 1.27.1 No/Poor signal

**Check:**

Inspect the contact pins on the Sub PBA Assy and contact pads on the Main Antenna Speaker Assy.

**Action:**

1. If dirty or oxidized – clean them.

2. If the contact pads on the Main Antenna Speaker Assy are damaged – replace the Main Antenna Speaker Assy.

3. If the contact pins on the Sub PBA Assy are damaged – replace Sub PBA Assy.

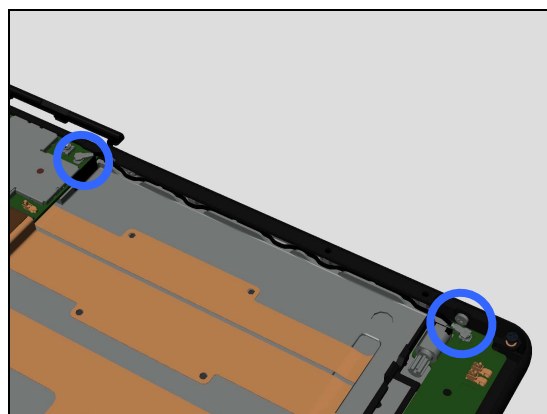
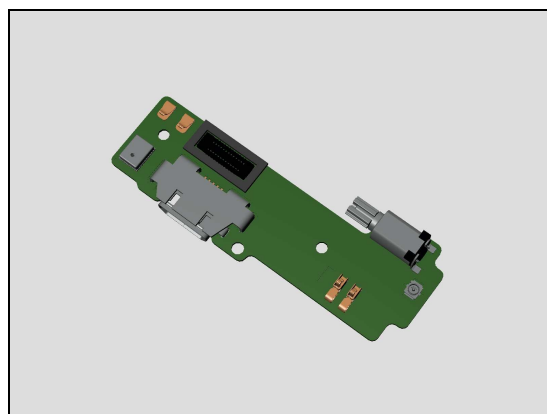
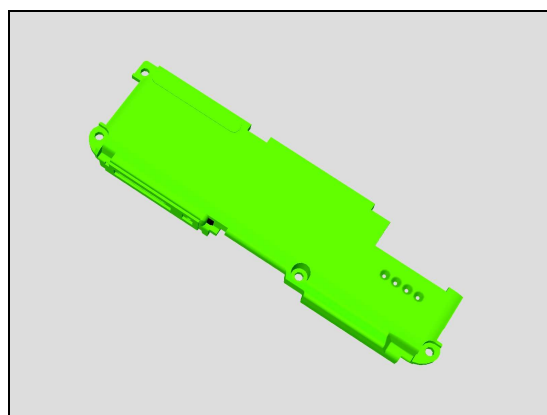
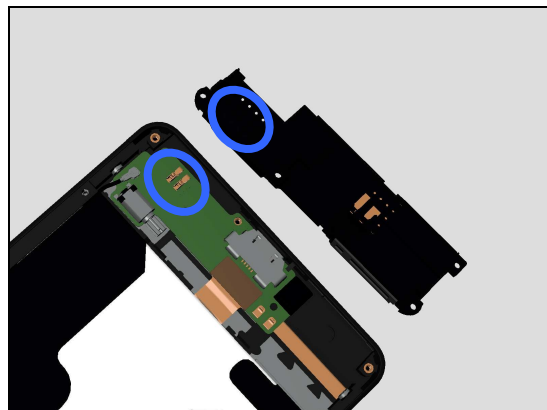
**Check:**

Inspect the two RF connectors of RF Cable to the Main PBA and Sub PBA Assy.

**Action:**

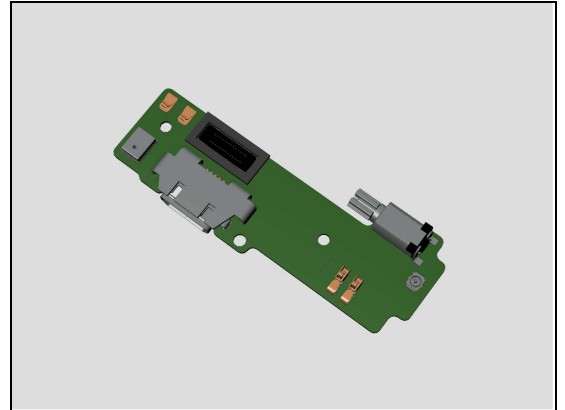
1. If not properly connected – disconnect and reconnect them.

2. If dirty or oxidized – clean them.

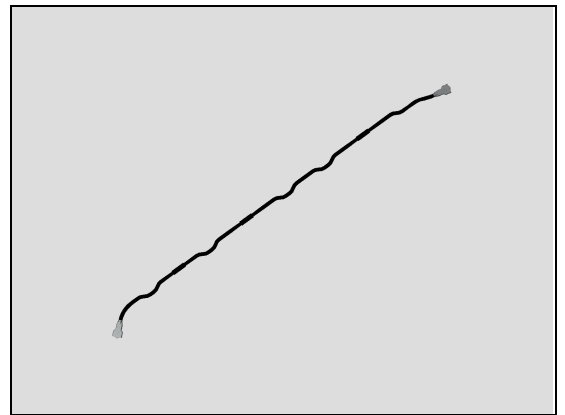


## Problem Areas: Network & Signal

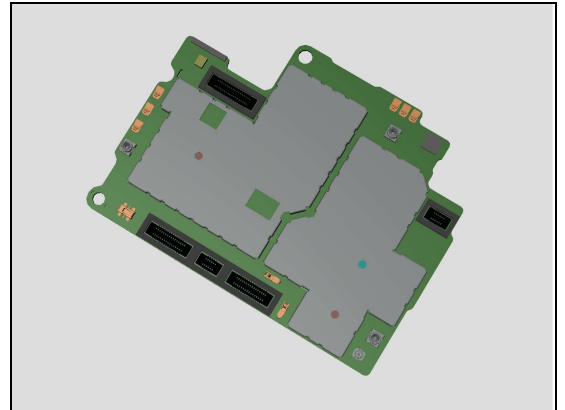
3. If the connector on the Sub PBA Assy is damaged – replace Sub PBA Assy.



4. If the RF Cable is damaged – replace it.



4. If the connector on the Main PBA is damaged – replace Main PBA.

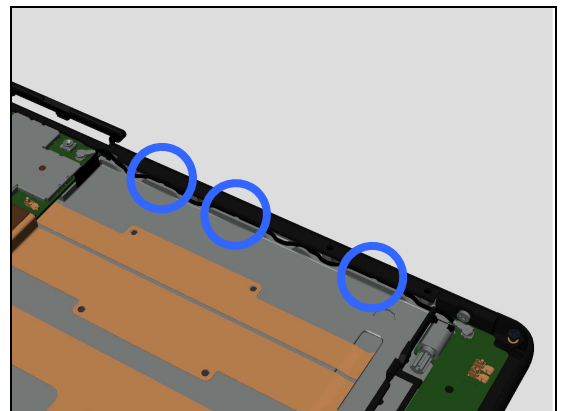


### Check:

Inspect if the three metal parts of the RF Cable are mounted into its clips.

### Action:

If not properly assembled – reassemble it.



## Problem Areas: Network & Signal

### Check:

Inspect the contact pins on the Main PBA and contact pads on the Antenna Assy DIV/BT/WIFI/GPS.

### Action:

1. If dirty or oxidized – clean them.

2. If the contact pads on the Antenna Assy DIV/BT/WIFI/GPS are damaged – replace the Antenna Assy DIV/BT/WIFI/GPS.

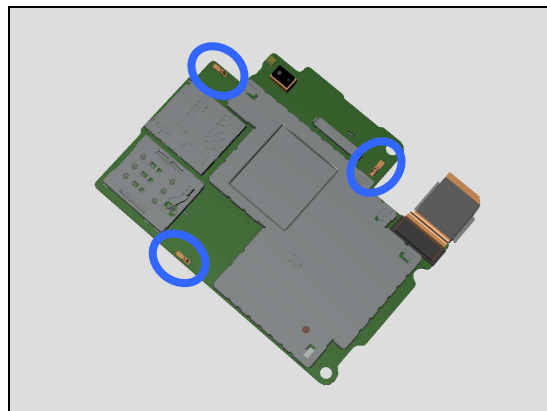
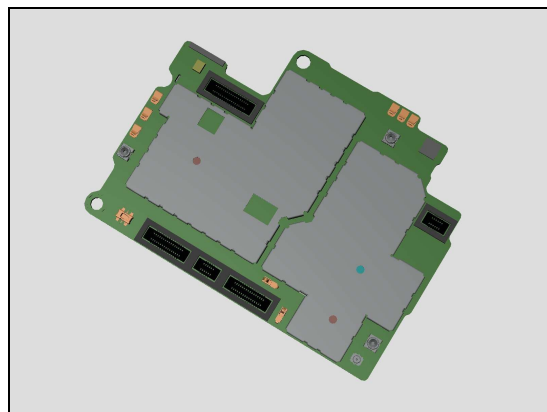
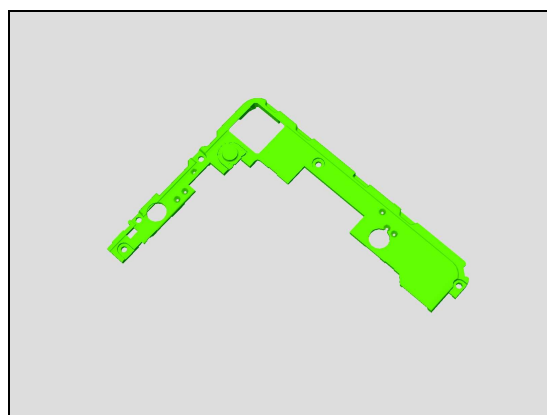
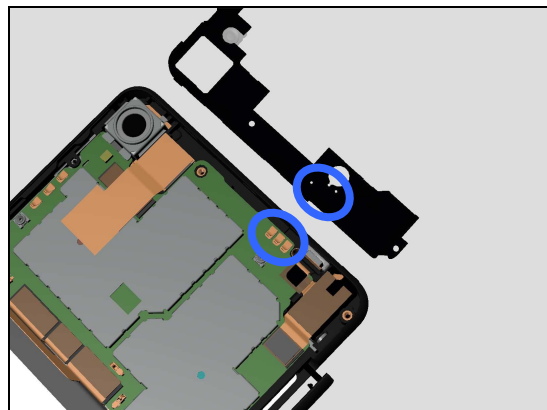
3. If the contact pins on the Main PBA are damaged – replace Main PBA.

### Check:

Inspect the three contact pins on the Main PBA are damaged or not.

### Action:

1. If damaged – replace Main PBA.





## Problem Areas

### 1.28 SIM (F3111/F3113/F3115)

#### 1.28.1 SIM not detected

**Check:**

Inspect the external port of the SIM card holder.

**Action:**

If dirty or clogged – clean the external port.



**Check:**

Check if Nano SIM is properly mounted into the SIM Tray Single and if a SIM Tray Single can be properly inserted into its holder and inspect the SIM Tray Single.

**Action:**

1. If not properly assembled – reassemble it.
2. If SIM Tray Single is damaged – Replace it.



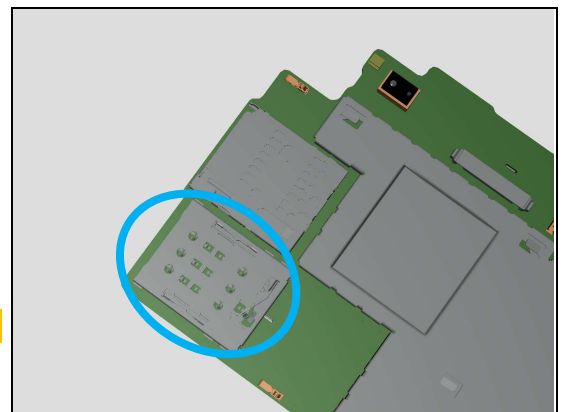
**Check:**

Inspect the SIM card holder on Main PBA.

**Action:**

1. If dirty or clogged – clean the holder.
2. Replace Main PBA.

**Note: only Single SIM illustration shown!**



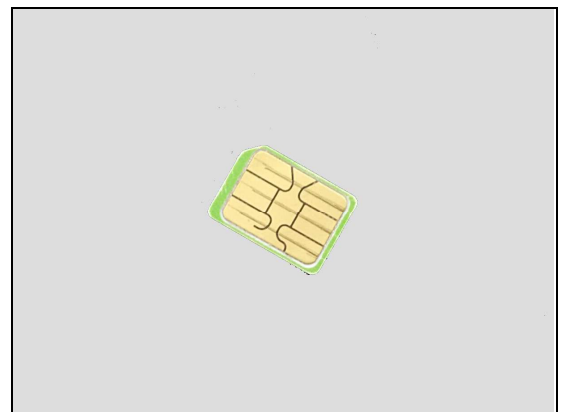
#### 1.28.2 Incorrect Nano SIM indicated

**Check:**

Check whether the phone is locked to a particular operator and whether the correct operator Nano SIM is being used.

**Action:**

1. Use a proper operator Nano SIM or test Nano SIM.
2. Replace Main PBA.



## Problem Areas

### 1.29 SIM (F3112/F3116)

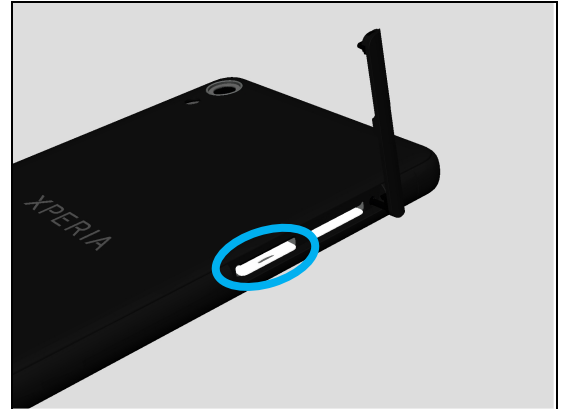
#### 1.29.1 SIM not detected

**Check:**

Inspect the external port of the SIM card holder.

**Action:**

If dirty or clogged – clean the external port.



**Check:**

Check if Nano SIM is properly mounted into the SIM Tray Dual and if a SIM Tray Dual can be properly inserted into its holder and inspect the SIM Tray Dual.

**Action:**

1. If not properly assembled – reassemble it.
2. If SIM Tray Dual is damaged – Replace it.



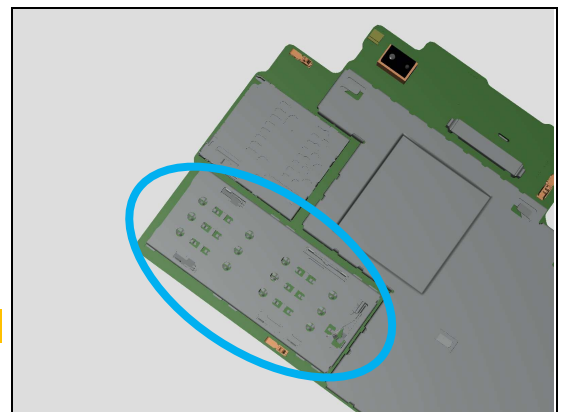
**Check:**

Inspect the SIM card holder on Main PBA.

**Action:**

1. If dirty or clogged – clean the holder.
2. Replace Main PBA.

**Note: only Dual SIM illustration shown!**



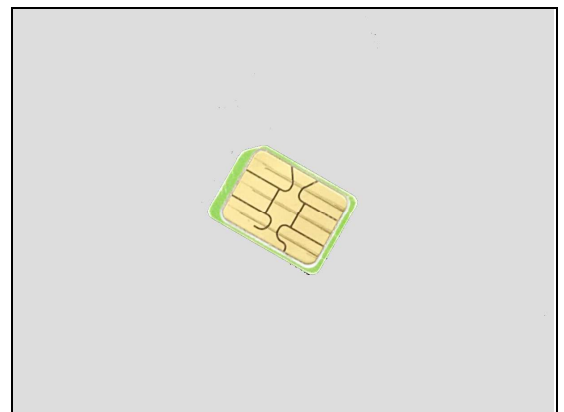
#### 1.29.2 Incorrect Nano SIM indicated

**Check:**

Check whether the phone is locked to a particular operator and whether the correct operator Nano SIM is being used.

**Action:**

1. Use a proper operator Nano SIM or test Nano SIM.
2. Replace Main PBA.



## Problem Areas

### 1.30 Charging

#### 1.30.1 Battery will not charge by USB connector

**Check:**

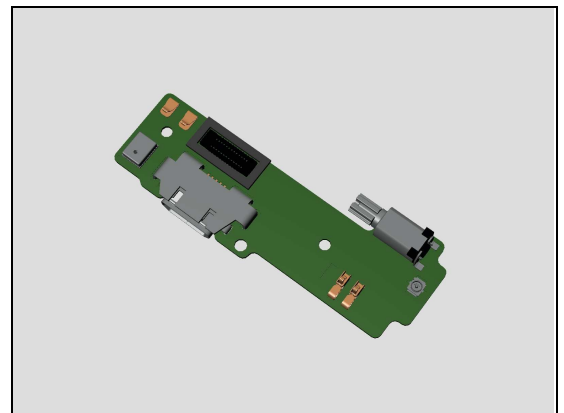
Inspect the USB connector.

**Action:**

1. If dirty or oxidized – clean the connector.



2. If USB connector is damaged – replace Sub PBA Assy.



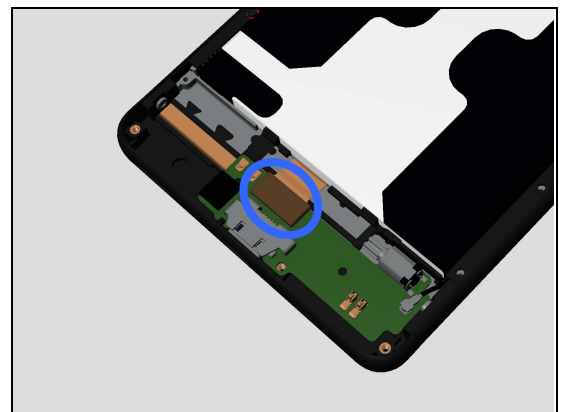
**Check:**

Inspect the BtB connector of Side Key FPC Assy to Sub PBA Assy.

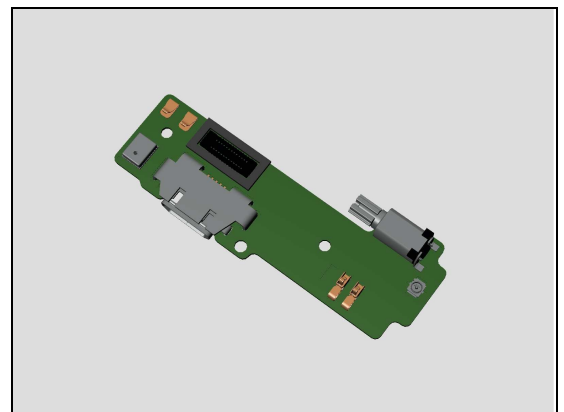
**Action:**

1. If not properly connected – disconnect and reconnect it.

2. If dirty or oxidized – clean it.

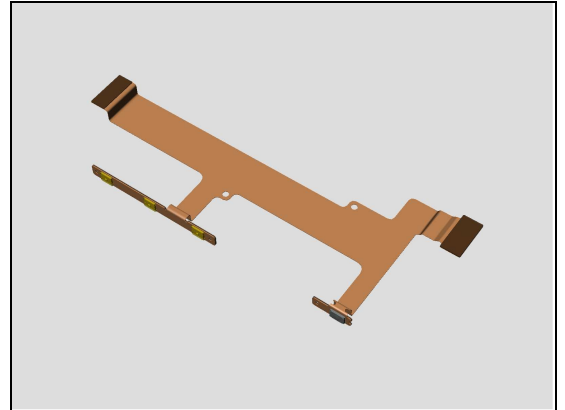


3. If Sub PBA Assy is damaged – replace it.



## Problem Areas: Charging

3. If the Side Key FPC Assy is damaged – replace it.

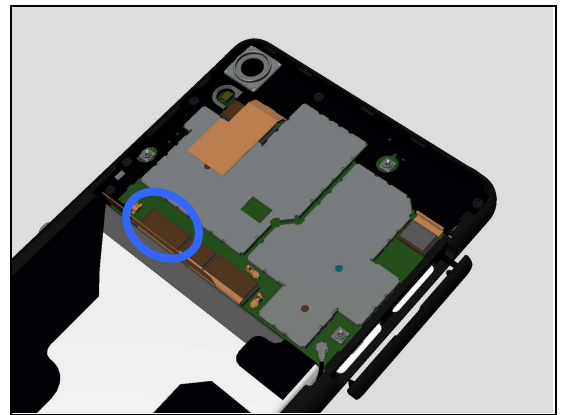


### Check:

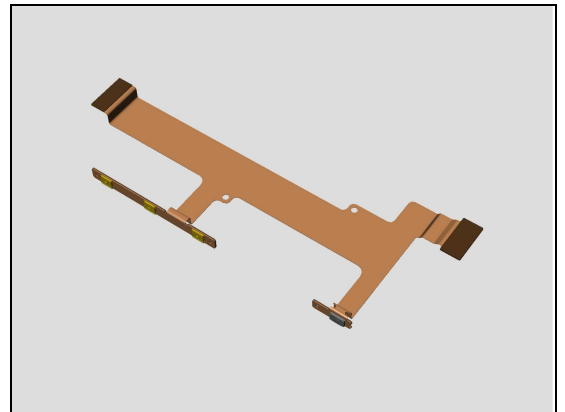
Inspect the BtB connector of Side Key FPC Assy to Main PBA.

### Action:

1. If not properly connected – disconnect and reconnect it.
2. If dirty or oxidized – clean it.



3. If the Side Key FPC Assy is damaged – replace it.
4. Replace the Main PBA.

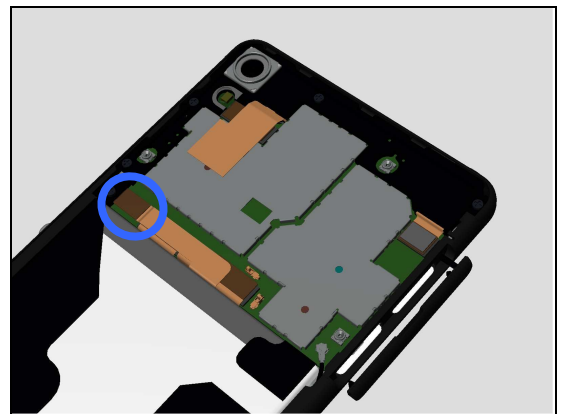


### Check:

Inspect the Battery connector to Main PBA.

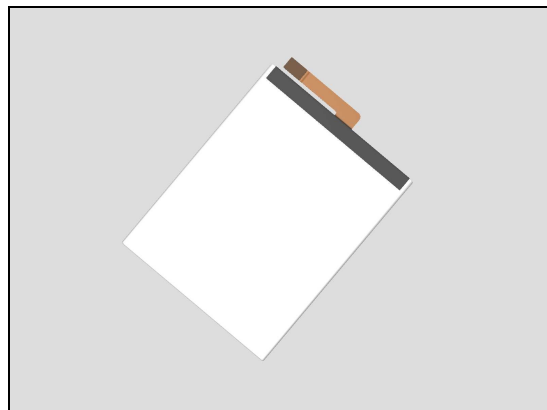
### Action:

1. If not properly connected – disconnect and reconnect it.
2. If dirty or oxidized – clean the both sides of the BtB connector.



## Problem Areas: Charging

3. If the BtB connector, the FPC or the Battery is damaged – replace the Battery.
4. Replace Main PBA.



## Problem Areas

### 1.31 Audio Jack test

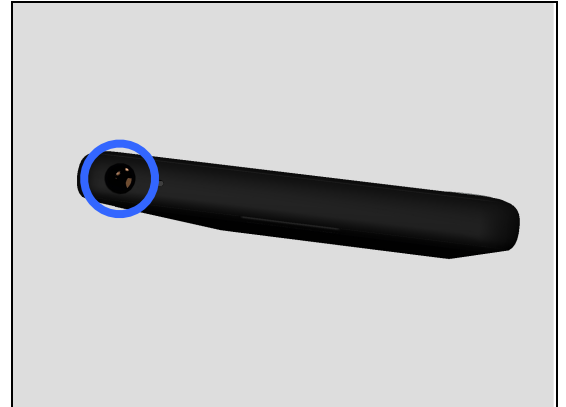
#### 1.31.1 Connection to headset fails

**Check:**

Inspect the external port of the Audio Jack Assy.

**Action:**

1. If dirty or oxidized – clean it.

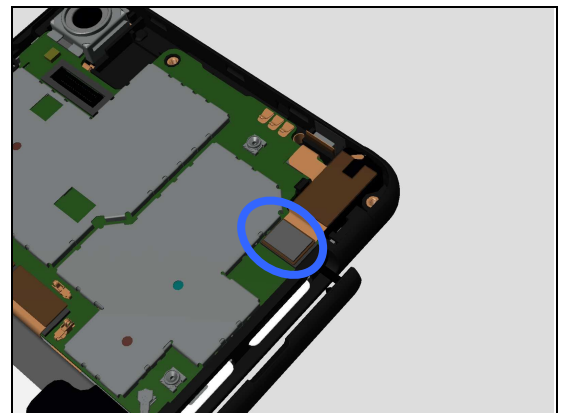


**Check:**

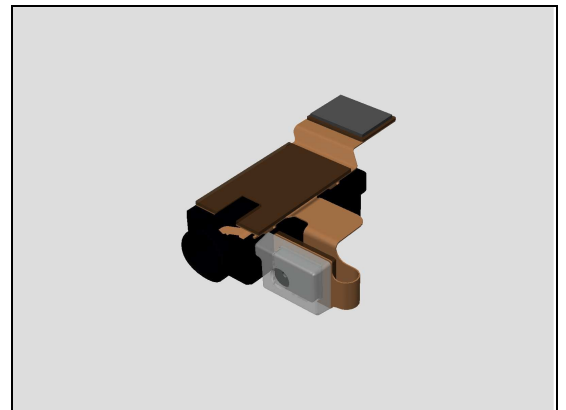
Inspect the BtB connector of Audio Jack Assy to Main PBA.

**Action:**

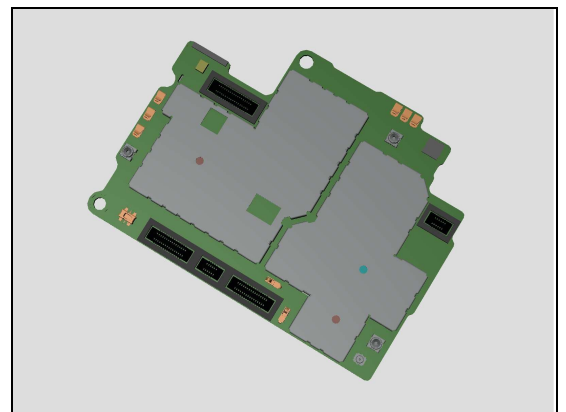
1. If not properly connected – disconnect and reconnect it.
2. If dirty or oxidized – clean it.



3. If the Audio Jack Assy is damaged – replace the Audio Jack Assy.



4. Replace Main PBA.



## Problem Areas

### 1.32 Data Communication

#### 1.32.1 Data transfer via System Connector fails

**Check:**

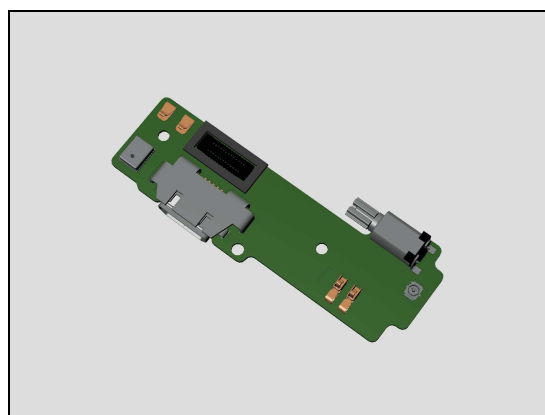
Inspect the USB connector.

**Action:**

1. If dirty or oxidized – clean the connector.



2. If USB connector is damaged – replace Sub PBA Assy.



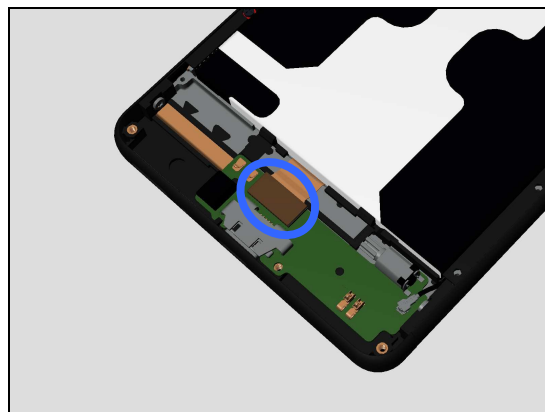
**Check:**

Inspect the BtB connector of Side Key FPC Assy to Sub PBA Assy.

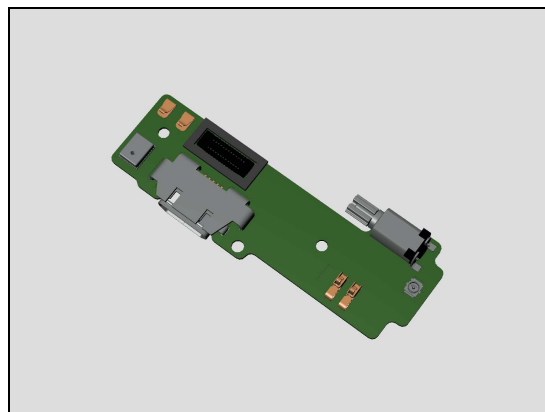
**Action:**

1. If not properly connected – disconnect and reconnect it.

2. If dirty or oxidized – clean it.



3. If Sub PBA Assy is damaged – replace it.



## Problem Areas: Data Communication

3. If the Side Key FPC Assy is damaged – replace it.

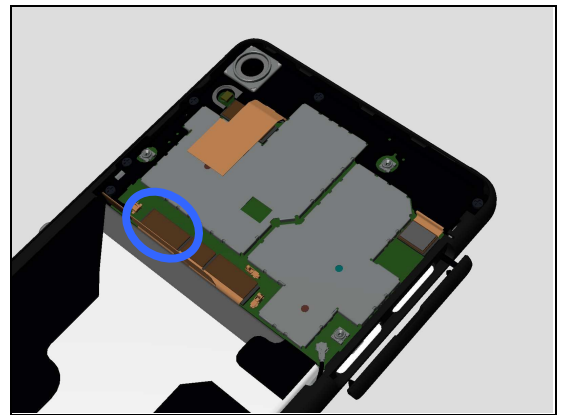


### Check:

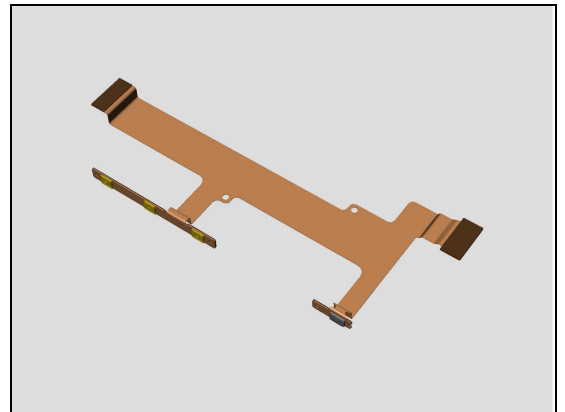
Inspect the BtB connector of Side Key FPC Assy to Main PBA.

### Action:

1. If not properly connected – disconnect and reconnect it.
2. If dirty or oxidized – clean it.



3. If the Side Key FPC Assy is damaged – replace it.
4. Replace the Main PBA.





## 2 Revision History

Rev.	Date	Changes / Comments
1	2016-Jun-01	Initial release
2	2016-Jul-12	1. Updated note of Accelerometer Calibration on page 4. 2. Updated chapter 1.1. 3. Updated Action instruction for page48 picture4.